

# Profile of Alcohol and Drug Indicators



For Pinellas County, Florida

---

Lisa Hilko, MPA  
Mark Vargo, Ph.D.  
Jackie Griffin-Doherty, MS

*Special thanks to:*

Jan Urbanski Ed.D., Pinellas County Schools  
Lt. Kevin Bennett, Pinellas County Sheriff's Office  
Chief Dorene Thomas, Pinellas Park Police Department  
Carali McClean, Central Florida Behavioral Health Network  
David Clapp, Central Florida Behavioral Health Network  
Ellen Snelling, MS, Tampa Alcohol Coalition  
Christy Hinderliter, LiveFree!



---

October 2009 Edition

LiveFree! Substance Abuse Prevention Coalition of Pinellas County  
[www.pinellascoalition.com](http://www.pinellascoalition.com)  
Operation PAR, Inc.

## LiveFree! Coalition Board:

### **BOARD**

**Jan Urbanski, CHAIR**

Pinellas County Safe and  
Drug Free Schools

**Cheryl Kerr, VICE-CHAIR**

St. Petersburg College

**Karen Belanger, SECRETARY**

Drug Free America Foundation

**Roman Mathis, TREASURER**

Gibbs High School, LiveFree! youth &  
Pinellas delegate of Florida Youth  
Delegation

**Deborah Martino**

Suncoast Safety Council

**Kevin Bennett**

Pinellas County Sheriff's Office

**Tanya Sessoms**

Family Resources, Inc.

**Wanda Stuart**

Operation PAR, Inc.

**Larry Jopek**

WEDU (PBS)

**Dorene Thomas**

Pinellas Park Police Department

**Carolyn Smith**

Pinellas County Health

Department/Tobacco Free Coalition

**Carali McLean**

Central Florida Behavioral Health  
Network

**Janis Ford**

City of St. Petersburg, Midtown  
Economic Development Business  
Assistance Center, Weed & Seed  
Program

**Reverend Bernard Smith**

Greene Chapel A.M.E. Church

**Mark S. Capps,**

Dept. of Alcohol Beverage and Tobacco

**Honorary Board Member**



The LiveFree! Substance Abuse Prevention Coalition of Pinellas County addresses alcohol, tobacco and other drug use among youth and young adults in Pinellas County. Using the information obtained from multiple data sources, LiveFree! is able to plan for effective intervention, prevention and environmental strategies to reduce the risk factors for alcohol, tobacco and other drug use within the community.

**LiveFree! Mission:** A strengthened substance abuse prevention and treatment effort that leads to improved health and safety for our community.

**LiveFree! Vision:** To create a safe, healthy and substance abuse-free community through public and private collaborations that link youth, young adults, families and neighborhoods to public awareness, advocacy, education and healthy solutions.

**LiveFree! Purpose:** To maximize resources that form a unified voice around public policy and action, which covers a broad array of substance abuse prevention and treatment efforts that are focused and guided in an identified direction.

## **Acknowledgements**

The information presented in this report was collected as part of a research needs assessment for LiveFree! This is the third edition of the report. Special thanks to our LiveFree! Workgroups that contributed to the successful publication.



For more information or to become a member of the **LiveFree! Substance Abuse Prevention Coalition of Pinellas County** please contact: [livefree@operpar.org](mailto:livefree@operpar.org) or call at: (813) 503-5658.

## Table of Contents

<b>List of Tables</b> .....	4
<b>List of Figures</b> .....	6
<b>Executive Summary</b> .....	7
Data Sources .....	8
<b>Report Highlights</b> .....	9
<b>Area Description</b> .....	10
<b>Alcohol Outlet Indicators</b> .....	11
<b>Criminal Justice Indicators</b> .....	12
<b>Substance Abuse Related Charges for Minors</b> .....	13
<b>Substance Abuse Related Charges for Young Adults</b> .....	18
<b>General Population Surveys: Adult Prevalence Rates</b> .....	19
<b>General Population: Young Adult Prevalence Rates</b> .....	21
<b>General Population Surveys: Adolescent Prevalence Rates</b> .....	23
<b>Mortality Data</b> .....	30
<b>Treatment Data</b> .....	33
<b>Summary</b> .....	34
<b>Appendix A. Youth Alcohol and Drug Data</b> .....	35
<b>Appendix B. DJJ Data</b> .....	38
<b>Appendix C. Pinellas Juvenile Assessment Center (PJAC)</b> .....	42
<b>Appendix D. Florida Alcohol and Drug Annual Impact Data</b> .....	45

## List of Tables

Table 1. Race Distribution for Pinellas County Residents in 2000 and 2008 .....	10
Table 2. Number of Alcohol Licenses by Type in Pinellas County .....	11
Table 3. Compliance Checks Conducted by ABT Officers in Pinellas County in 2008.....	11
Criminal Justice Indicators .....	12
Table 4. Youth Alcohol and Non-Alcohol Related Drug Charges by Type and Substance in Pinellas County .....	13
Table 5. 2007 and 2008 JARF Admissions by Gender.....	15
Table 6. 2007 and 2008 JARF Primary Drug Use at Admission.....	15
Table 7. 2007 and 2008 JARF Admissions by City of Residence .....	15
Table 8. 2007 and 2008 JARF Admissions by Race.....	15
Table 9. Fiscal Years 2006/2007 and 2007/2008 Pinellas County PACT Data of Youth Given Prescreen .....	16
Table 10. Fiscal Years 2006/2007 and 2007/2008 Pinellas County PACT Data of Youth Given Full Assessment .....	16
Table 11. PJAC Admission Data from 2005-2008 .....	17
Table 12. Young Adult Ages 18-25 Alcohol and Non-Alcohol Related Drug Charges by Type and Substance in Pinellas County .....	18
Table 13. Behavioral Risk Factor Surveillance System Data .....	19
Table 14. Suncoast District National Household Survey on Drug Use and Health (NSDUH) Prevalence Data.....	20
Table 15. Drinker Risk Group by Region.....	21
Table 16. 2008 Central Florida Alcohol and Drug Prevalence Rates .....	22
Table 17. Central Florida College Students Who Have on at Least One Occasion Felt/Done the Following Attitudes/Behaviors by Drinker Risk Group. ....	22
Table 18. Prevalence of Substance Use among Pinellas County Students.....	23
Table 19. Motor Vehicle-Related Risk Behaviors Reported by Pinellas County Youth.....	24
Table 20. Comparison of Lifetime Use of Selected Drugs by Type for Pinellas County and Statewide Data.....	25

Table 21. Comparison of Past 30-Day Use of Selected Drugs by Type for Pinellas County and Statewide Data .....	26
Table 22. Percent of Pinellas County and Florida Statewide Students who Report Their Parents Feel it Would Be Wrong or Very Wrong to Drink Alcohol Regularly, Smoke Cigarettes or Smoke Marijuana .....	28
Table 23. Mean Age of First Substance Use among Pinellas County Students.....	28
Table 23A. Percentages of Pinellas County Youth and Florida Statewide High School Youth who Started Using Alcohol at Age 13 or Younger.....	28
Table 24. Pinellas County Schools Out of School Suspensions for Tobacco, Alcohol or Drugs .....	29
Table 25. Pinellas County Traffic Crash Statistics .....	30
Table 26. 2008 Top Seven Counties in Florida for DUI Related Crashes, Injuries and Fatalities .....	30
Table 27. Pinellas and Pasco County Medical Examiners Office Toxicology Data for Deaths Testing Positive for Drugs .....	31
Table 28. Drug Related Deaths by Type, Cause and Present.....	32
Table 29. Detailed Comparison of Pinellas County Students Reporting Lifetime Use of Selected Drugs .....	35
Table 30. Detailed Comparison of Pinellas County Students Reporting Past 30-Day Use of Selected Drugs .....	36
Table 31. Detailed 2008 Comparison of Pinellas County Students versus Statewide Students Reporting Lifetime Use of Selected Drugs .....	37
Table 32. Pinellas County Zip Codes with Referrals to DJJ in Fiscal Year 2007/2008 .....	38
Table 33. State of Florida Economic Costs of Adverse Events of Alcohol Use .....	45
Table 34. State of Florida Economic Costs of Adverse Events of Drug Use.....	45

## List of Figures

Figure 1. Comparison of DUI Arrests for Pinellas, Hillsborough and Orange Counties .....	12
Figure 2. Comparison of Drug/Narcotic Arrests for Pinellas, Hillsborough and Orange Counties .....	12
Figure 3. Comparison of Liquor Law Violations for Pinellas, Hillsborough and Orange Counties .....	12
Figure 4. Comparison of Alcohol and Non-Alcohol Related Drug Charges by Youth Location of Residence in Pinellas County .....	14
Figure 5. Young Adult Charges Opened in 2008 by Drug Type .....	18
Figure 6. Comparison of Past 30-Day Alcohol Use for Pinellas County vs. Statewide Middle and High School Students .....	27
Figure 7. Comparison of Past 30-Day Binge Drinking for Pinellas County vs. Statewide Middle and High School Students .....	27
Figure 8. Percent of Pinellas County Students who Report Their Parents Feel it Would Be Wrong or Very Wrong to Drink Alcohol Regularly, Smoke Cigarettes or Marijuana .....	27
Figure 9. Pinellas County Middle and High School Incidents of Alcohol, Tobacco and Other Drugs on School Property .....	29
Figure 10. Percentage of Toxicology Reports Testing Positive for Selected Drugs Based on Total Number Found Positive at Time of Death .....	31
Figure 11. Admission to Pinellas County Substance Abuse Treatment Providers for Adults .....	33
Figure 12. Admission to Pinellas County Substance Abuse Treatment Providers for Youth .....	33
Figure 13. Map of Pinellas County High Risk Zip Codes for Youth Referrals to DJJ in Fiscal Year 2007/2008 .....	39
Figure 14. Map of Pinellas County High Risk Zip Codes for Youth Charges from DJJ in Fiscal Year 2007/2008 .....	40
Figure 15. 2008 Zip Code Map of Pinellas County Non Alcohol-Related Drug Charge by Youth Location of Residence .....	41

## Executive Summary

In Pinellas County, alcohol has the highest prevalence of use over any other substance for all age groups. In 2008, Pinellas County adults had higher rates of alcohol use than Florida statewide averages, 61.2% versus 51.3% respectively, (National Center for Disease Control's Behavioral Risk Factor Surveillance System Data). In 2008, Pinellas County students had higher rates of alcohol use in their lifetime (54.9%) compared to Florida students statewide (53.2%), and the percentage of Pinellas County high school students who reported using alcohol at age 13 or under was 34.9% versus 32.3% statewide. Additionally, the 30-day prevalence rate for alcohol use among high school students in Pinellas County is 42.1% compared to 39.5% statewide (2008, Florida Youth Substance Abuse Survey).

Other drug use is also prevalent throughout the county. In 2008, there were 8,623 drug/narcotic arrests in Pinellas County, and data obtained through the Criminal Justice Information System (CJIS) showed there were 937 juvenile arrests and 796 young adult arrests for alcohol and other drugs in 2008.

The misuse and abuse of prescription drugs is an increasing concern in Pinellas County. According to the Substance Use, Health, and Safety Survey, non-medical use of prescription drugs in Pinellas County middle and high school students increased from 2006 to 2008: an overall 22.2% in 6<sup>th</sup>, 9.8% in 8<sup>th</sup>, 16.7% in 10<sup>th</sup> and 70.6% in 12<sup>th</sup> grade. The 2008 Medical Examiners Commission Drug Report states there were 8 youth fatalities and 62 young adult fatalities caused by prescription drugs in Pinellas County in 2008 and 11 youth and 72 young adult cases where prescription drugs were present in toxicology reports at time of death.

Marijuana is the second most commonly used drug among Pinellas County youth with a past 30-day prevalence rate of 20.2% compared to the statewide average of 16.2%. The percentage of high school students in Pinellas County who reported using marijuana at age 13 or under was 15.5% versus 10.6% statewide (FYSAS, 2008).

Cigarettes are the third most commonly used drug among Pinellas County youth with a 30-day prevalence rate among high school students of 14.6% compared to the statewide average of 12.6%. The percentage of Pinellas County high school students who reported using cigarettes at age 13 or under was 22.8% versus 19.9% statewide, and 29.2% of all students in Pinellas County used tobacco on at least one occasion in their lifetime compared to a statewide frequency of 27.0% (FYSAS, 2008).

Although this report does include youth, young adult and adult data, a larger emphasis is placed on the youth and young adults in Pinellas County and the State of Florida, as these populations are the primary focus of the LiveFree! Substance Abuse Prevention Coalition of Pinellas County (LiveFree!). According to the Substance Use, Health, and Safety Survey in Pinellas County, from 2006 to 2008 in Pinellas County, past 30-day use of tobacco, alcohol and marijuana has increased in 6<sup>th</sup>, 8<sup>th</sup>, 10<sup>th</sup> and 12<sup>th</sup> grades. Because substance use is so prevalent in our community, LiveFree! is one of the many organizations that work to create a safer environment for our youth and young

adults through environmental strategies, educational outreach programs and community events. All members of the coalition strive to teach our young people about the harmful effects of alcohol and other drugs and ways to live a substance free life.

Indicator reports are useful tools to evaluate the trends in alcohol and drug use in communities. This report includes information gathered from a number of sources throughout Pinellas County, the State of Florida and the nation. By examining the data in a research-based manner, we can identify problems, where they are occurring and what the focus should be in the future.

## Data Sources

This report provides information relevant to alcohol and other drug trends in Pinellas County, the State of Florida and the nation using data collected by the sources listed below:

- US Bureau of Census
- Division of Alcoholic Beverages and Tobacco (DABT)
- The Florida Department of Law Enforcement, Uniform Crime Report (UCR)
- Criminal Justice Information System (CJIS) Minor Drug Charges
- Pinellas County Sheriff's Office
- Juvenile Addiction Receiving Facility operated by Personal Enrichment through Mental Health Services (PEMHS)
- Florida Department of Juvenile Justice- Positive Assessment Change Tool
- Pinellas Juvenile Assessment Center (PJAC)
- National Center for Disease Control's Behavioral Risk Factor Surveillance System
- Selected Metropolitan/Micropolitan Area Trends (SMART)
- National Household Survey on Drug Use and Health (NSDUH)
- Core Alcohol and Drug Survey from the Florida Institutions of Higher Education
- Prevalence of Substance Use among Pinellas County Students, Part I: Trends in Substance Use
- The Florida Youth Substance Abuse Survey (FYSAS)
- Florida Department of Education- Florida School Indicator Report
- Pinellas County Schools
- Florida Department of Highway Safety and Motor Vehicles Traffic Crash Statistics
- Medical Examiner, District 6, Pasco and Pinellas Counties
- Central Florida Behavioral Health Network
- Pinellas County Schools Youth Risk Behavior Survey Report
- Department of Juvenile Justice Bureau of Data and Research
- LiveFree! in partnership with the Pinellas Juvenile Assessment Center
- Florida Alcohol and Drug Abuse Association
- Florida Substance Abuse and Mental Health Corporation

# Report Highlights

## Alcohol Outlets

- There were 2,517 alcohol licenses in Pinellas County in 2008
- 1,046 off-site consumption only packages were active in 2008
- 1,369 for consumption on property only licenses were active in 2008

## Criminal Justice Indicators

- There were 3,408 DUI arrests in Pinellas County in 2008. In 2005, there were 3,613 DUI arrests, which was the highest amount of arrests from 2003 to 2008
- The number of drug/narcotic arrests had a steady increase from 2003 to 2007 in Pinellas County. From 2007 to 2008, there was a decrease in the number of drug/narcotic arrests, 9,534 to 8,623, respectively
- From 2006 to 2008, the percentage of possession charges by youth increased for alcohol and other drugs combined, whereas the percentage for sales charges decreased
- In 2008, 52.8% of young adult drug charges (ages 18-25) were marijuana related

## Adult and Young Adult Prevalence Rates

- Data indicates that more adults in Pinellas County have consumed alcohol within the past 30-days from 2002-2008 than the State of Florida averages

## Adolescent Prevalence Rates

- Alcohol was the most commonly used substance by Pinellas County high school students, followed by marijuana and cigarettes in 2008 based on 30-day prevalence rates
- From 2004 to 2008, Pinellas County 6<sup>th</sup>, 8<sup>th</sup>, 10<sup>th</sup> and 12<sup>th</sup> graders reported increases in operating motor vehicles while under the influence of alcohol or drugs as well as increases in riding in motor vehicles with alcohol or drug impaired drivers
- In 2008, more Pinellas County middle and high school students were suspended for other drugs than alcohol and tobacco combined

## Mortality Data

- In 2008, there were 1,390 alcohol-related motor vehicle crashes, 895 alcohol-related motor vehicle injuries and 51 alcohol-related fatalities in Pinellas County
- In 2008, in Pinellas and Pasco counties there were 1,105 deaths where toxicology reports tested positive for alcohol or other drugs
- Oxycodone caused more drug-related deaths in District 6 than any other drug in the total population, young adult population and adolescent population

## Treatment Data

- From Fiscal Year 2006/2007 to Fiscal Year 2007/2008, the amount of Residential, Outpatient and Detox services for adults decreased throughout Pinellas County
- From Fiscal Year 2006/2007 to Fiscal Year 2007/2008 the amount of Outpatient and Detox services for youth increased throughout Pinellas County

## Area Description

According to 2008 US Census Data, Pinellas County had an estimated population of 910,260 residents (3,291.0 persons per square mile in 2000). In 2008, 5.0% of the population was under 5 years old, 18.8% was under 19 years old and 21.1% of the population was 65 years of age or older. Pinellas County female residents made up 51.9% of the population Pinellas County residents were female. In 2007, 11.3% of residents met the federal guidelines for poverty. The median household income in Pinellas County was \$44,325 up from \$36,684 in the 2000 census. An increase in racial diversity occurred in Pinellas County between 1990 and 2000. The proportion of White residents decreased whereas Black, Asian/Pacific Islander, American Indian, and those reporting Other increased. The Hispanic population has doubled since 1990. Based on 2008 estimations, White residents make up more than 84.9% of the racial identity of individuals living in Pinellas County.

**Table 1. Race Distribution for Pinellas County Residents in 2000 and 2008**

Racial Category	Number 2000	Percent 2000	Estimated # 2008	Estimated % 2008
Total Population	921,482	100.0%	910,260	100.0%
Total Hispanics (Includes mixed ethnicities/races)	42,760	4.64%	65,432	7.2
White*	762,614	82.76%	772,530	84.9
Black*	81,146	8.81%	94,401	10.4
American Indian and Eskimo*	2,292	0.25%	3829	0.4
Asian*	18,794	2.04%	25,697	2.8
Hawaiian and Pacific Islander*	435	0.05%	709	0.1
Other*	1,326	0.14%	-----	-----
Two or More Races*	12,115	1.31%	13,094	1.4%

*Note.* Data obtained from the US Census Bureau.

## Alcohol Outlet Indicators

**Table 2. Number of Alcohol Licenses by Type in Pinellas County**

Description	# Licenses 2006	# Licenses 2008
<b>Alcohol Package Sales Licenses</b>		
Beer & Wine Package Sales	1,116	870
Beer Only Package Sales	110	69
Beer, Wine & Liquor Package Sales	131	107
<b>Consumed on Premises Licenses</b>		
Beer & Wine Package or Consumption on Premises	771	664
Beer, Wine & Liquor Package or Consumption on Premises	951	680
Beer Only Package or Consumption on Premises	27	25
<b>Other License Types</b>		
Theme parks, bottle clubs, golf clubs, symphony/orchestra, etc.	17	102
<b>All Licenses</b>	<b>3,123</b>	<b>2,517</b>

*Note.* Data obtained from Division of Alcoholic Beverages and Tobacco (DABT).

- Among alcohol package sales licenses, meaning licenses that do not allow onsite consumption, beer and wine package sales were the highest package in 2006 and 2008
- Among consumed on premises licenses, beer, wine and liquor packages were the highest in 2006 and 2008

**Table 3. Compliance Checks Conducted by ABT Officers in Pinellas County in 2008**

	Alcohol Checks			Tobacco Checks		
	Sold	Did Not Sell	% that Sold	Sold	Did Not Sell	% that Sold
St. Petersburg/St. Pete Beach	30	159	15.9%	10	58	14.7%
Clearwater/Clearwater Beach	7	50	12.3%	8	66	10.8%
Largo	8	66	10.8%	5	28	15.2%
Pinellas Park	3	22	12.0%	3	12	20.0%
Dunedin	1	12	7.7%	5	34	12.8%
Oldsmar	0	4	0.0%	4	10	28.6%
Palm Harbor	0	25	0.0%	7	44	13.7%
Seminole	4	8	33.3%	0	4	0.0%
Tarpon Springs	4	17	19.0%	1	18	5.3%
Other Cities	8	35	18.6%	5	18	21.7%
Total	65	398	14.0%	48	292	14.1%

*Note.* Data obtained from Division of Alcoholic Beverages and Tobacco (DABT). Alcohol and tobacco outlets that were Closed, Out of Business or Unsatisfactory were removed from sample.

- In 2008, ABT Officers completed 803 alcohol or tobacco compliance checks to ensure that vendors did not sell to youth. Of the 803, 113 vendors sold alcohol or tobacco products to someone under the legal age limit, (14.1%)

# Criminal Justice Indicators

Figure 1. Comparison of DUI Arrests for Pinellas, Hillsborough and Orange Counties

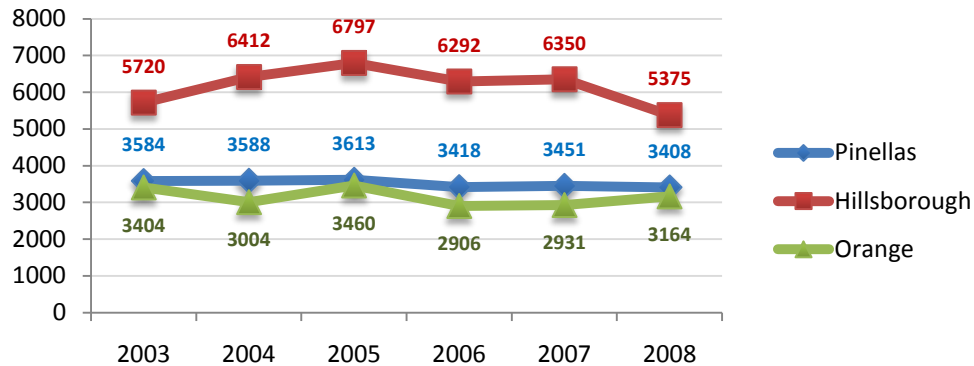


Figure 2. Comparison of Drug/Narcotic Arrests for Pinellas, Hillsborough and Orange Counties

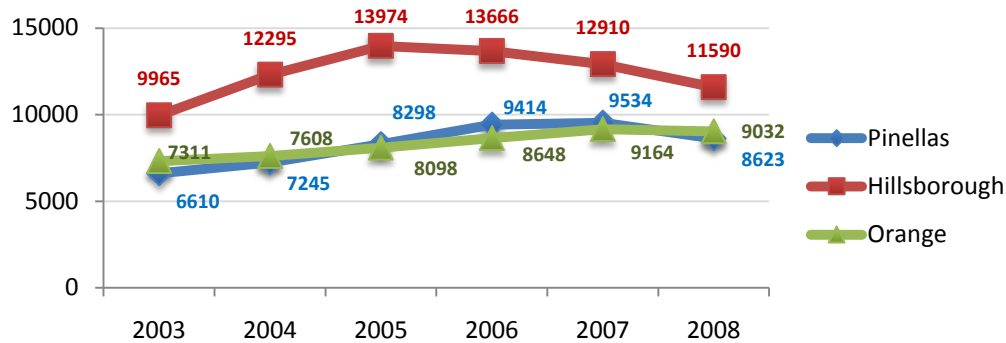
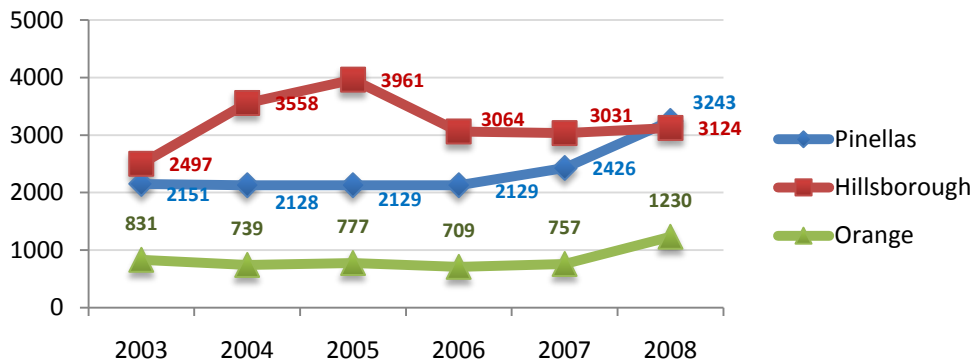


Figure 3. Comparison of Liquor Law Violations for Pinellas, Hillsborough and Orange Counties



Note. Data obtained from Uniform Crime Report (UCR) retrieved through FDLE website: [http://www.fdle.state.fl.us/FSAC/data\\_statistics.asp](http://www.fdle.state.fl.us/FSAC/data_statistics.asp).

- In Pinellas County, Liquor Law violations were relatively stationary from 2003 to 2006. However from 2006 to 2008, violations increased 52.3%. It is unclear whether this is reflective of an actual increase in violations or a result of the efforts of law enforcement to identify violators

## Substance Abuse Related Charges for Minors

During 2008, the Uniform Crime Report (UCR) indicated 48,686 arrests occurred in Pinellas County. Of those, 42,511 (87.3%) were adults and 6,175 (12.7%) were juveniles. Of the 6,175 youth arrests, 937 (15.2%) were charges for alcohol or drug related violations. Data from the Criminal Justice Information System (CJIS) indicated that 88 charges were alcohol-related while 849 charges were for other drugs. The table below outlines those charges for youth with alcohol and drug related violations in 2006, 2007 and 2008.

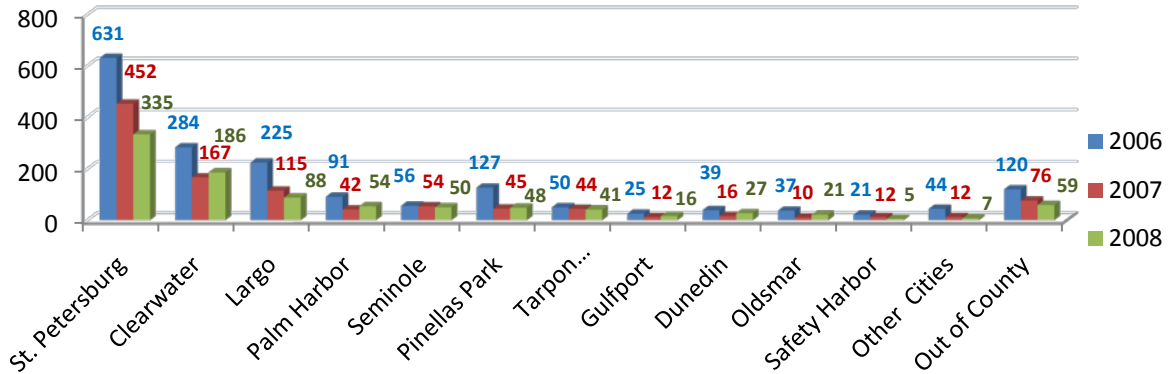
**Table 4. Youth Alcohol and Non-Alcohol Related Drug Charges by Type and Substance in Pinellas County**

Charge	2006 (n=1,750)	2007 (n=1,057)	2008 (n=937)
<b>Possession</b>	<b>89.8%</b>	<b>95.0%</b>	<b>96.2%</b>
Alcohol	5.6%	6.1%	9.4%
Marijuana	42.2%	50.1%	52.9%
Cocaine	19.7%	15.9%	9.6%
Heroin	0.06%	0.0%	0.0%
Paraphernalia	14.4%	15.0%	13.6%
Other Controlled Substances	7.9%	7.9%	10.7%
<b>Sales</b>	<b>9.1%</b>	<b>4.0%</b>	<b>2.9%</b>
Marijuana	3.0%	1.6%	1.0%
Cocaine	5.1%	1.9%	1.3%
Heroin	0.06%	0%	0.0%
Other Controlled Substances	0.91%	0.5%	0.6%
<b>Other (Trafficking, Cultivating, Counterfeit)</b>	<b>1.1%</b>	<b>1.0%</b>	<b>0.9%</b>
Total	100.0%	100.0%	100.0%

*Note.* Data obtained from the Criminal Justice Information System.

- From 2006 to 2008, the percentage of youth arrested for alcohol-related charges displayed an overall increase of 67.9%, and marijuana charges displayed an overall increase of 25.4%
- From 2006 to 2008, the percentage of youth arrested for selling marijuana displayed an overall decrease of 66.7%

**Figure 4. Comparison of Alcohol and Non-Alcohol Related Drug Charges by Youth Location of Residence in Pinellas County**



*Note.* Data obtained from the Criminal Justice Information System.

- In 2006, 2007 and 2008, youth residing in St. Petersburg had the highest amount of alcohol and other drug arrests combined in the County, followed by Clearwater and Largo
- In 2008, there were 88 alcohol-related charges by youth and 849 non alcohol-related charges by youth in Pinellas County

The Juvenile Addiction Receiving Facility (JARF) is the centralized receiving facility for impaired youth in Pinellas and Pasco Counties. The JARF is a service of Personal Enrichment through Mental Health Services (PEHMS), open to youth 18 years old and under with substance abuse issues. The typical length of stay is 3-5 days.

**Table 5. 2007 and 2008 JARF Admissions by Gender**

	2007 (n=347)		2008 (n=359)	
Male	223	64.3%	239	66.6%
Female	124	35.7%	120	33.4%
Total	347	100.0%	359	100.0%

**Table 6. 2007 and 2008 JARF Primary Drug Use at Admission**

	2007 (n=347)		2008 (n=359)	
Alcohol	102	29.4%	116	32.3%
Marijuana	182	52.4%	205	57.1%
Xanax	9	2.6%	6	1.7%
Cocaine/Crack	12	3.5%	11	3.1%
Oxycodone	--	---	10	2.8%
Other	42	12.1%	11	3.1%
Total	347	100.0%	359	100.0%

**Table 7. 2007 and 2008 JARF Admissions by City of Residence**

	2007 (n=347)		2008 (n=359)	
Clearwater	25	7.2%	42	11.7%
Largo	56	16.1%	43	12.0%
New Port Richey	24	6.9%	17	4.7%
Palm Harbor	21	6.1%	24	6.7%
Seminole	26	7.5%	17	4.7%
St. Petersburg	93	26.8%	94	26.2%
Out of County	42	12.1%	56	15.6%
Other Pinellas	60	17.3%	66	18.4%
Total	347	100.0%	359	100.0%

**Table 8. 2007 and 2008 JARF Admissions by Race**

	2007 (n=347)		2008 (n=359)	
White	295	85.0%	298	83.0%
Black	24	6.9%	25	7.0%
Other	28	8.1%	36	10.0%
Total	347	100.0%	359	100.0%

*Note.* Data obtained from Juvenile Addiction Receiving Facility.

- In 2007 and 2008, more youth reported marijuana as their primary drug of use compared to any other illicit substance
- In 2007 and 2008, more youth were admitted to the JARF from St. Petersburg than any other city

The Positive Assessment Change Tool Prescreen and Full Assessment were developed to assist Juvenile Probation Officers and contracted case managers in determining a youth's level of risk to re-offend, identifying areas of highest criminogenic need, developing a meaningful intervention plan and monitoring progress in reducing risk factors (Department of Juvenile Justice).

**Table 9. Fiscal Years 2006/2007 and 2007/2008 Pinellas County PACT Data of Youth Given Prescreen**

<b>Substance Use Data from Youth Given a Prescreen</b>				
	<b>FY 2006/2007 (n=7,379)</b>		<b>FY 2007/2008 (n=7,636)</b>	
	<b>Number</b>	<b>Percent</b>	<b>Number</b>	<b>Percent</b>
Youth Reported Drug Use	3,927	53.2%	4,280	56.1 %
Youth Reported Alcohol Use	3,088	41.7%	3,691	48.3%
Youth Reported Drug Problem	1,039	14.1%	1,070	14.0%
Youth Reported Alcohol Problem	495	6.7%	525	6.9%

**Table 10. Fiscal Years 2006/2007 and 2007/2008 Pinellas County PACT Data of Youth Given Full Assessment**

<b>Substance Use Data from Youth Given Full Assessment</b>				
	<b>FY 2006/2007 (n=2,793)</b>		<b>FY 2007/2008 (n=3,290)</b>	
	<b>Number</b>	<b>Percent</b>	<b>Number</b>	<b>Percent</b>
Has Used Drugs	1,975	70.7%	2,417	74.5%
Has Used Alcohol	1,477	52.9%	1,916	58.2%
Has Drug Problem	800	28.6%	988	30.0%
Has Alcohol Problem	384	13.7%	463	14.1%
Marijuana Use	1,042	37.3%	1,555	47.3%
Amphetamines Use	59	2.1%	38	1.2%
Other Drug Use	224	8.0%	211	6.4%
Use Contributed to Crime	486	17.4%	521	15.8%
Use Disrupted Education	317	11.3%	361	11.0%
Use Caused Family Conflict	444	15.9%	469	14.3%

*Note.* Data obtained from Department of Juvenile Justice

- From FY 2006/2007 to FY 2007/2008, there was an overall decrease of 0.7% of youth who reported having a drug problem during a prescreen
- From FY 2006/2007 to FY 2007/2008, there was an overall increase of 3.0% of youth who reported having an alcohol problem during a prescreen
- From FY 2006/2007 to FY 2007/2008, there was an overall increase of 5.4% of youth who reported using drugs during a full assessment
- From FY 2006/2007 to FY 2007/2008, there was an overall increase of 2.1% of youth who reported using alcohol during a full assessment

The Pinellas Juvenile Assessment Center (PJAC) is a centralized processing facility for youths who are arrested by area law enforcement. The PJAC is considered a one-stop-shop for screening, assessing and processing youths who are involved with the juvenile justice system.

**Table 11. PJAC Admission Data from 2005-2008**

	<b>2005</b>	<b>2006</b>	<b>2007</b>	<b>2008</b>
# of youth presented for admission	8,177	8,272	8,149	7,081
# of youth admitted	8,037	8,082	7,978	6,746
# eligible for an assessment	6,819	6,744	6,904	3,793
# given assessment 1,800	1,800	1683	1,469	1,775

*Note.* Data obtained from the Pinellas Juvenile Assessment Center.

The reasons for nearly 75% of the admitted youth not receiving substance abuse assessments include youth being discharged due to traffic charges; Dependency/No Charge; Staffing; Parent-Pick Up; Ordinance Violation; and JDC Transport.

- In 2005, 2006 and 2007, 7,819 youth (50.4%) who were eligible for an assessment but did not receive an assessment, did not receive an assessment due to Parent-Pick Up. This was the number one reason during all three years
- In 2008, the number one reason that youth did not receive an assessment was Staffing (1,404 youth) followed by Parent-Pick Up (1,391 youth)

Of the youth given a voluntary drug screen in 2005 through 2008, 29.3% tested positive for an illicit substance. If these percentages of positive drug screens are indicative of all the youth admitted to the PJAC, then nearly 1,400 youth who leave the PJAC each year would have tested positive for drugs but have gone undetected.

\*For a detailed description of 2006, 2007 and 2008 PJAC data see Appendix C.

## Substance Abuse Related Charges for Young Adults

During 2008, the Uniform Crime Report (UCR) indicated 48,686 arrests occurred in Pinellas County. Of those, 42,511 (87.3%) were adults. There were 796 alcohol and other drug-related charges by young adults, ages 18-25 according to the Criminal Justice Information System.

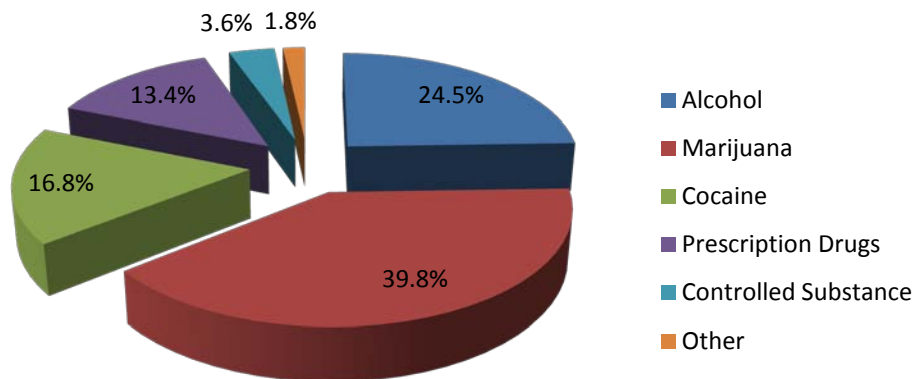
**Table 12. Young Adult Ages 18-25 Alcohol and Non-Alcohol Related Drug Charges by Type and Substance in Pinellas County**

Charge	2008 # of open charges	2008 % of open charges
<b>Alcohol Related</b>	<b>195</b>	<b>100.0%</b>
DUI Related	162	83.1%
Underage Possession Related	18	9.2%
Open Container Related	12	6.2%
Other	3	1.5%
<b>Drug Related Charges</b>	<b>601</b>	<b>100.0%</b>
Marijuana	317	52.8
Cocaine	134	22.3
Prescription Drugs	107	17.8
Controlled Substance (unidentified)	29	4.8
Other Drugs	9	1.5
Paraphernalia	5	0.8

Note. Data obtained from the Criminal Justice Information System.

- In 2008, there were a total of 796 charges opened for young adults ages 18-25 for alcohol or drug-related offenses

**Figure 5. Young Adult Charges Opened in 2008 by Drug Type**



Note. Data obtained from the Criminal Justice Information System.

## General Population Surveys: Adult Prevalence Rates

Table 13. Behavioral Risk Factor Surveillance System Data

	Pinellas County				Florida Statewide			
	2005	2006	2007	2008	2005	2006	2007	2008
<b>Alcohol</b>								
Adults who have had at least 1 drink of alcohol within the past 30 days	59.3%	61.3%	56.3%	61.2%	55.6%	53.6%	54.4%	51.3%
Heavy Drinkers (adult men having more than two drinks daily, and adult women having more than one drink daily)	8.1%	5.1%	6.1%	5.8%	6.9%	5.4%	6.2%	5.2%
Binge Drinkers (adults having five or more drinks on one occasion) within the past 30 days	16.5%	16.2%	10.1%	12.3%	14.2%	21.0%	14.2%	13.0%
<b>Tobacco</b>								
Current Smoking (adults reporting having smoked 100 cigarettes in their lifetime and currently smoke)	24.0%	23.6%	17.7%	22.6%	21.7%	21.0%	19.3%	17.5%

Note. Data obtained from National Center for Disease Control's Behavioral Risk Factor Surveillance System Data and SMART: Selected Metropolitan/Metropolitan Area Risk Trends [www.cdc.gov/brfss/index.htm](http://www.cdc.gov/brfss/index.htm).

- Data indicate that more adults in Pinellas County have consumed alcohol within the past 30-days from 2005 to 2008 than the State of Florida averages
- Current smoking by adults displays an overall increase of 27.7% from 2006 to 2008 in Pinellas County

**Table 14. Suncoast District National Household Survey on Drug Use and Health (NSDUH) Prevalence Data**

<b>2004, 2005, &amp; 2006 Averages</b>		
	<b>Circuit 6 Pinellas County</b>	<b>Circuit 13 Hillsborough County</b>
<b>Alcohol</b>		
Alcohol Use, Past Month	53.5%	48.8%
Binge Alcohol Use, Past Month	21.2%	22.2%
Perceptions of Great Risk of Having 5 or More Alcoholic Drinks Once or Twice a Week	43.2%	46.4%
<b>Cigarettes</b>		
Cigarette Use, Past Month	26.3%	25.5%
Any Tobacco Product Use, Past Month	30.8%	30.2%
Perceptions of Great Risk of Smoking One or More Packs per Day	73.9%	76.8%
<b>Marijuana</b>		
Marijuana Use, Past Month	5.7%	6.1%
Annual Rate of First Use of Marijuana	1.3%	1.6%
Perceptions of Great Risk of Smoking Marijuana Once a Month	40.1%	41.6%
<b>Illicit Drugs</b>		
Illicit Drug Use, Past Month	7.2%	8.7%
Any Illicit Drug Use Other Than Marijuana, Past Month	3.2%	4.3%
Cocaine Use, Past Year	2.3%	3.0%
Nonmedical use of pain relievers, past year	4.4%	6.2%

*Note.* NSDUH substance data are reported on annual averages, <http://www.samhsa.gov/substate2k8/SecC.htm>.

- From 2004 to 2006, alcohol past month use and cigarette past month use was higher in Pinellas County than Hillsborough County
- From 2004 to 2006, marijuana and illicit drug use was higher in Hillsborough County than Pinellas County

## General Population Surveys: Young Adult Prevalence Rates

There are a number of higher education institutions in Pinellas County with large student body populations. To name a few, at St. Petersburg College there were 14,062 students enrolled from ages 19 to 24 in 2007. Eckerd College has a student body of 1,817 undergraduates. The University of South Florida at St. Petersburg had 1,847 undergraduate students enrolled in 2009. The University of South Florida at Tampa, the main campus, had 17,627 undergraduate students in 2009. Students from Pinellas County commute to the University of South Florida Tampa campus. The Core Alcohol and Drug Survey was administered to a sample of higher education institutions in the state of Florida. A coordinated statewide data collection was conducted. There were 12 institutions that participated in the study: four from North Florida, five from Central Florida and three from South Florida. There were 7,852 respondents state-wide. For our purposes, Central Florida represents college students in or around Pinellas County.

**The survey broke down respondents into the following categories:**

**Heavy and frequent drinker:**

- drinking severity - drank 5 or more drinks at a sitting over last two weeks one time or more
- drinking frequency - drank 3 times per week or more in last year

**Heavy drinker:**

- drinking severity - drank 5 or more drinks at a sitting over last two weeks one time or more
- drinking frequency - drank 1 time per week or less in last year

**Non-heavy drinker:**

- drinking severity - did not drink 5 or more drinks at a sitting over last two weeks
- drinking frequency - not restricted

**Non-drinker:**

- never used alcohol in the last year

**Table 15. Drinker Risk Group by Region**

Drinker Group	North Florida		Central Florida		South Florida		State of Florida	
	#	Column %	#	Column %	#	Column %	#	Column %
Heavy and frequent drinker	502	15.7%	471	15.5%	151	10.0%	1124	14.5%
Heavy drinker	761	23.7%	681	22.4%	264	17.5%	1706	22.0%
Non-heavy drinker	1307	40.8%	1271	41.9%	712	47.1%	3290	42.4%
Non-drinker	636	19.8%	612	20.2%	384	25.4%	1632	21.1%
Total	3206	100.0%	3035	100.0%	1511	100.0%	7752	100.0%

*Note.* Data Obtained from the 2008 Florida Core Study Regional Report.

- Students from Central Florida had higher rates of “Heavy and Frequent Drinker” and “Heavy Drinker” than Florida Students Statewide

**Table 16. 2008 Central Florida Alcohol and Drug Prevalence Rates**

(N=3067)	Lifetime Prevalence		Annual Prevalence		Past 30-Day Prevalence		3 times a week or more	
	Number used	Percent used	Number used	Percent used	Number used	Percent used	Number used	Percent used
Tobacco	1319	43.01%	1013	33.03%	675	22.01%	283	9.23%
Alcohol	2493	81.28%	2427	79.13%	2024	65.99%	551	17.97%
Marijuana	1296	42.26%	894	29.15%	506	16.50%	196	6.39%
Cocaine	273	8.90%	135	4.40%	31	1.01%	5	0.16%
Amphetamines	299	9.75%	141	4.60%	62	2.02%	27	0.88%
Sedatives	232	7.56%	125	4.08%	44	1.43%	7	0.23%
Hallucinogens	238	7.76%	125	4.08%	35	1.14%	0	0.00%
Opiates	85	2.77%	36	1.17%	14	0.46%	2	0.07%
Inhalants	118	3.85%	26	0.85%	9	0.29%	1	0.03%
Designer drugs	230	7.50%	81	2.64%	21	0.68%	1	0.03%
Steroids	27	0.88%	15	0.49%	9	0.29%	3	0.10%
Other drugs	138	4.50%	67	2.18%	18	0.59%	0	0.00%

*Note.* Data Obtained from the 2008 Florida Core Study Regional Report.

- In 2008, 66.0% of college students in Central Florida used alcohol in the past 30-days
- In 2008, 16.5% of college students in Central Florida used marijuana in the past 30-days

**Table 17. Central Florida College Students Who Have on at Least One Occasion Felt/Done the Following Attitudes/Behaviors by Drinker Risk Group.**

	Non-Heavy	Heavy	Heavy and Frequent
Had a hangover	51.2% (n=1,252)	86.0% (n=671)	93.1% (n=467)
Got nauseated or vomited	46.2% (n=1,252)	77.9% (n=669)	84.1% (n=466)
Missed a class	16.8% (n=1,252)	38.9% (n=669)	61.0% (n=466)
Done something I later regretted	22.3% (n=1,251)	44.0% (n=668)	59.9% (n=466)
Thought I might have a drinking or drug problem	3.7% (n=1,247)	11.5% (n=670)	28.5% (n=467)
Been in trouble with police, residence hall, or other campus authority	3.9% (n=1,252)	11.1% (n=670)	79.0% (n=467)
Got into an argument or fight	17.2% (n=1,250)	40.2% (n=670)	57.7% (n=466)
Driven a car while under the influence	16.4% (n=1,245)	40.1% (n=669)	61.3% (n=465)
Been arrested for DWI or DUI	0.3% (n=1,250)	0.8% (n=670)	1.8% (n=468)
Have been taken advantage of sexually	5.7% (n=1,244)	11.2% (n=671)	15.2% (n=463)

*Note.* Data Obtained from the 2008 Florida Core Study Regional Report.

- Heavy and Frequent drinkers are higher in every category compared to Heavy and Non-Heavy drinkers

## General Population Surveys: Adolescent Prevalence Rates

Table 18. Prevalence of Substance Use among Pinellas County Students

Drug Behavior	6 <sup>th</sup> Grade	8 <sup>th</sup> Grade	10 <sup>th</sup> Grade	12 <sup>th</sup> Grade
<b>Lifetime Use</b>				
2004 Alcohol Use	9.3%	35.1%	55.2%	64.8%
2006 Alcohol Use	6.7%	31.0%	52.9%	65.9%
2008 Alcohol Use	9.1%	34.4%	57.5%	69.7%
2004 Marijuana Use	3.0%	17.7%	34.9%	44.0%
2006 Marijuana Use	2.0%	13.7%	30.9%	45.0%
2008 Marijuana Use	2.4%	17.9%	35.5%	50.1%
<b>Past 30-day Behavior</b>				
2004 Alcohol Use	5.5%	19.1%	32.2%	41.0%
2006 Alcohol Use	2.2%	15.7%	29.9%	42.8%
2008 Alcohol Use	4.1%	17.2%	33.8%	46.2%
2004 Tobacco Use	3.4%	----	13.5%	25.3%
2006 Tobacco Use	1.4%	8.6%	17.5%	26.2%
2008 Tobacco Use	1.9%	10.4%	19.3%	29.7%
2004 Marijuana Use	2.0%	11.3%	19.7%	24.5%
2006 Marijuana Use	0.9%	7.8%	17.7%	23.2%
2008 Marijuana Use	1.2%	9.2%	22.0%	29.0%
2004 Inhalant Use	7.2%	9.6%	3.6%	3.7%
2006 Inhalant Use	4.0%	7.0%	3.1%	1.9%
2008 Inhalant Use	5.0%	7.3%	3.0%	2.2%
2006 Prescription Drug Misuse	0.9%	4.1%	4.8%	3.4%
2008 Prescription Drug Misuse	1.1%	4.5%	5.6%	5.8%

*Note.* Data obtained from 2004 Prevalence of Substance Use among Pinellas County Students, Part I: Trends in Substance Use and the Substance Use, Health, and Safety Survey in Pinellas County (Previously titled Prevalence of Substance Use among Pinellas County Students). In 2006 survey, data were not calculated in the same format. The numbers above reflect 2006 data taken from the 2008 Substance Use, Health, and Safety Survey in Pinellas County.

- Lifetime and Past 30-day behaviors increase in use from 6<sup>th</sup> to 12<sup>th</sup> grade for alcohol, marijuana, tobacco, and inhalant use from 2006 to 2008 (please note decrease in 10<sup>th</sup> grade inhalant use from 3.1% to 3.0%)
- The data indicate that the largest increase in alcohol and drug use happens from 6<sup>th</sup> to 8<sup>th</sup> grade in middle school
- From 2006 to 2008 there was a significant increase in past 30-day use in 10<sup>th</sup> and 12<sup>th</sup> grade marijuana use. In 10<sup>th</sup> graders there was an overall increase on 24.3%, and for 12<sup>th</sup> graders there was a 25.0% overall increase
- Recent prescription drug use increased in all grades from 2006 to 2008
- From 2006 to 2008, there was a significant increase in lifetime use for every grade for alcohol use and 10<sup>th</sup> and 12<sup>th</sup> grade for marijuana use

**Table 19. Motor Vehicle-Related Risk Behaviors Reported by Pinellas County Youth**

Impaired Driver/Passenger	6 <sup>th</sup> Grade	8 <sup>th</sup> Grade	10 <sup>th</sup> Grade	12 <sup>th</sup> Grade
<b>Past 30-Day Passenger</b>				
2004 Riding with Alcohol-Impaired Driver	5.9%	14.3%	21.5%	22.3%
2006 Riding with Alcohol-Impaired Driver	5.6%	13.0%	20.1%	22.8%
2008 Riding with Alcohol-Impaired Driver	14.1%	23.4%	25.8%	26.0%
2004 Riding with Drug-Impaired Driver	5.2%	9.0%	17.2%	23.2%
2006 Riding with Drug-Impaired Driver	3.5%	7.2%	15.8%	21.1%
2008 Riding with Drug-Impaired Driver	7.8%	13.4%	20.3%	27.3%
<b>Past 30-Day Driver</b>				
2004 Driving Under the Influence of Alcohol	-----	3.0%	4.2%	15.0%
2006 Driving Under the Influence of Alcohol	0.5%	2.0%	3.7%	12.8%
2008 Driving Under the Influence of Alcohol	1.7%	3.1%	3.8%	13.0%
2004 Driving Under the Influence of Drugs	-----	3.0%	5.8%	14.8%
2006 Driving Under the Influence of Drugs	0.3%	2.0%	5.1%	13.3%
2008 Driving Under the Influence of Drugs	1.8%	4.9%	8.3%	18.4%

*Note.* Data obtained from 2004 Prevalence of Substance Use among Pinellas County Students, Part I: Trends in Substance Use and the Substance Use, Health, and Safety Survey in Pinellas County (Previously titled Prevalence of Substance Use among Pinellas County Students). In 2006 survey, data were not calculated in the same format. The numbers above reflect 2006 data taken from the 2008 Substance Use, Health, and Safety Survey in Pinellas County.

- From 2006 to 2008, grades 6, 8, 10 and 12 showed increases in riding in motor vehicles with alcohol or drug impaired drivers
- From 2006 to 2008, there was an overall 80.0% increase in 8<sup>th</sup> graders who reported riding with alcohol-impaired drivers in the past 30-days and an overall 86.1% increase in the amount of 8<sup>th</sup> graders who reported riding with drug-impaired drivers in the past 30-days
- From 2006 to 2008, grades 6, 8, 10 and 12 showed increases in operating motor vehicles while under the influence of alcohol or drugs
- From 2006 to 2008, there was an overall increase of 38.3% of 12<sup>th</sup> graders who drove under the influence of drugs

**Table 20. Comparison of Lifetime Use of Selected Drugs by Type for Pinellas County and Statewide Data**

	Pinellas County				Florida Statewide			
	2002	2004	2006	2008	2002	2004	2006	2008
<b>Middle School</b>								
N=	922	606	518	390	28,771	26,906	24,630	39,686
<b>Any Alcohol</b>	45.9%	41.5%	37.4%	34.6%	42.3%	42.6%	39.7%	36.3%
<b>Cigarettes</b>	30.4%	27.1%	18.6%	15.0%	26.7%	23.9%	20.5%	17.4%
<b>Smokeless Tobacco Use</b>	6.3%	5.3%	6.8%	---	7.8%	7.5%	7.9%	----
<b>Marijuana/Hashish</b>	14.9%	11.1%	11.9%	6.6%	11.6%	10.9%	9.8%	8.5%
<b>Inhalant Use</b>	14.1%	18.3%	15.2%	16.6%	13.6%	15.7%	13.8%	13.2%
<b>Alcohol or Any Illicit Drug</b>	51.2%	46.8%	42.3%	41.8%	46.8%	47.6%	44.2%	41.9%
<b>Any Illicit Drug Except Marijuana</b>	14.1%	18.3%	17.9%	19.3%	13.6%	15.7%	13.8%	17.5%
<b>High School</b>								
N=	804	771	619	459	33,608	33,008	32,263	51,785
<b>Any Alcohol</b>	72.2%	71.3%	72.1%	69.0%	68.5%	69.6%	68.4%	66.2%
<b>Cigarettes</b>	51.9%	44.5%	39.2%	39.0%	44.2%	42.2%	38.1%	34.4%
<b>Smokeless Tobacco Use</b>	12.6%	12.0%	11.5%	13.9%	12.4%	11.2%	13.0%	12.5%
<b>Marijuana</b>	43.1%	41.3%	37.6%	38.6%	33.6%	33.6%	32.0%	30.8%
<b>Inhalant Use</b>	12.0%	12.4%	11.0%	10.4%	10.0%	10.6%	11.0%	10.1%
<b>Any Illicit Drug Except Marijuana</b>	25.8%	25.4%	21.6%	29.0%	20.2%	20.2%	19.6%	23.1%
<b>Alcohol or Any Illicit Drug</b>	73.6%	73.9%	74.1%	71.1%	70.7%	72.1%	70.9%	68.9%

Note. Data obtained from Florida Youth Substance Abuse Survey (FYSAS), <http://www.dcf.state.fl.us/mentalhealth/publications/fysas/>.

- FYSAS data from Pinellas County middle schools lifetime use indicate that an overall decrease was shown from 2002 to 2008 in alcohol (24.6% decrease), cigarettes (50.7% decrease) and marijuana (55.7% decrease)
- In 2008, Pinellas County middle school students reported lower rates of lifetime alcohol and marijuana use than the State of Florida but higher rates of inhalants use
- FYSAS data from Pinellas County high schools lifetime use indicate that an overall decrease was shown from 2002 to 2008 in alcohol (4.4% decrease), cigarettes (24.9% decrease) and marijuana (10.4% decrease)
- Pinellas County high school students reported higher rates of lifetime use from 2002 to 2008 in alcohol, cigarettes and marijuana than the State of Florida averages

**\*\*See Appendix A for:** detailed comparison of Pinellas County middle school versus high school lifetime substance use; detailed comparison of Pinellas County middle school versus high school past 30-day substance use; and detailed 2008 comparison of Pinellas County students versus statewide students

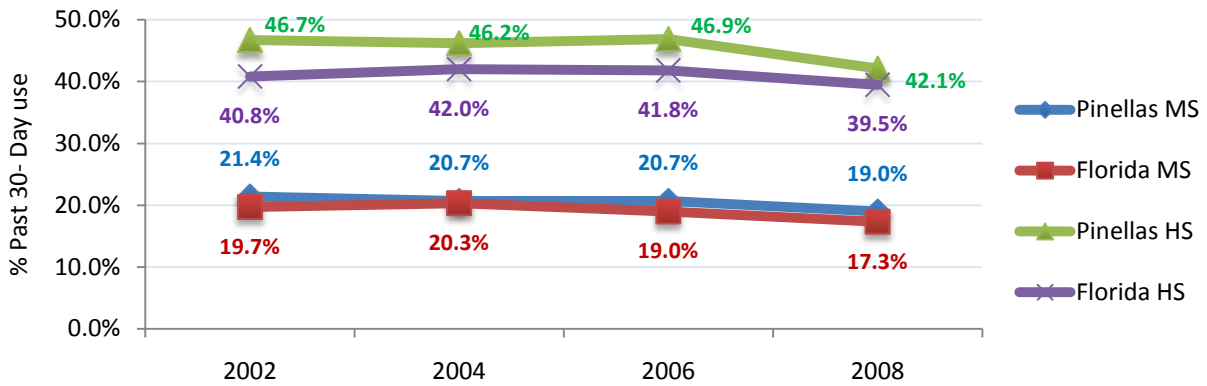
**Table 21. Comparison of Past 30-Day Use of Selected Drugs by Type for Pinellas County and Statewide Data**

	Pinellas County				Florida Statewide			
	2002	2004	2006	2008	2002	2004	2006	2008
<b>Middle School</b>								
N=	922	606	518	390	28,771	26,906	24,630	39,686
<b>Any Alcohol</b>	21.4%	20.7%	20.7%	19.0%	19.7%	20.3%	19.0%	17.3%
<b>Binge Drinking</b>	9.1%	6.8%	9.3%	5.0%	8.6%	8.5%	8.4%	6.2%
<b>Cigarettes</b>	7.8%	7.3%	6.2%	6.1%	7.1%	6.9%	6.0%	4.7%
<b>Smokeless Tobacco Use</b>	2.3%	1.9%	2.5%	-----	2.9%	3.0%	3.2%	-----
<b>Marijuana/Hashish</b>	8.7%	6.2%	5.7%	4.0%	5.9%	5.3%	5.2%	4.4%
<b>Inhalant Use</b>	5.7%	6.5%	7.2%	6.4%	5.1%	4.6%	5.5%	5.2%
<b>Any Illicit Drug Except Marijuana</b>	9.0%	8.0%	9.2%	8.5%	7.4%	8.6%	7.2%	8.0%
<b>Alcohol or Any Illicit Drug</b>	26.8%	25.6%	24.1%	22.8%	23.8%	24.6%	22.7%	21.7%
<b>High School</b>								
N=	804	771	619	459	33,608	33,008	32,263	51,785
<b>Any Alcohol</b>	46.7%	46.2%	46.9%	42.1%	40.8%	42.0%	41.8%	39.5%
<b>Binge Drinking</b>	27.7%	25.8%	28.0%	23.4%	22.3%	22.0%	23.0%	21.5%
<b>Cigarettes</b>	20.6%	17.7%	14.1%	14.6%	14.9%	15.0%	14.1%	12.6%
<b>Smokeless Tobacco Use</b>	4.6%	4.7%	5.2%	6.0%	4.6%	4.3%	5.6%	5.3%
<b>Marijuana</b>	22.0%	19.7%	21.9%	20.2%	17.2%	16.4%	16.0%	16.2%
<b>Inhalant Use</b>	2.6%	2.6%	3.7%	2.4%	2.3%	2.4%	2.8%	2.2%
<b>Any Illicit Drug Except Marijuana</b>	10.5%	9.3%	9.8%	11.1%	7.4%	7.5%	7.4%	9.7%
<b>Alcohol or Any Illicit Drug</b>	49.7%	51.4%	59.4%	45.4%	23.8%	45.5%	44.9%	43.3%

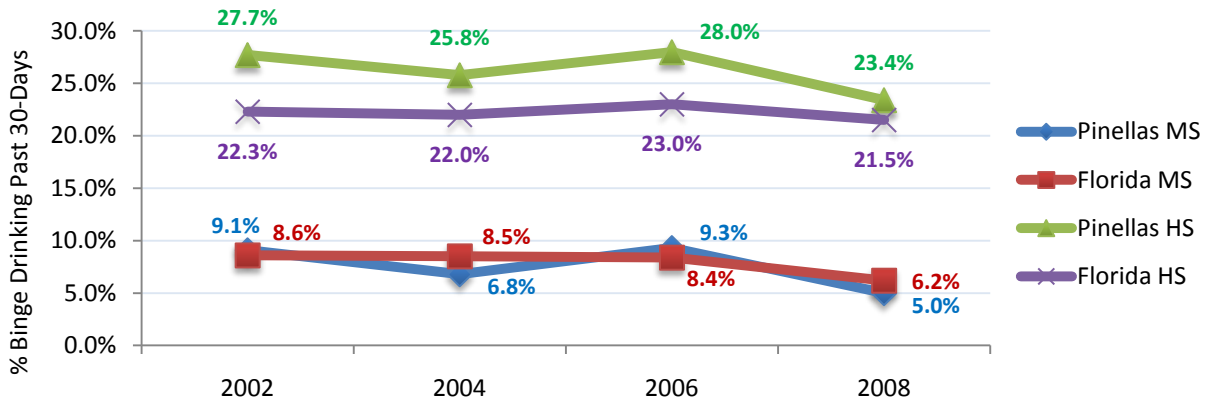
Note. Data obtained from Florida Youth Substance Abuse Survey (FYSAS), <http://www.dcf.state.fl.us/mentalhealth/publications/fysas/>.

- FYSAS data from Pinellas County middle schools 30-day past use indicates that an overall decrease was shown from 2002 to 2008 in alcohol (11.2% decrease), binge drinking (45.1% decrease), cigarettes (21.8% decrease) and marijuana (54.0% decrease)
- Pinellas County middle school students reported higher rates of 30-day past use from 2002 to 2008 for alcohol, binge drinking, marijuana and inhalant use compared to the State of Florida averages
- FYSAS data from Pinellas County high schools 30-day past use indicate that an overall decrease was shown from 2002 to 2008 in alcohol (9.9% decrease), binge drinking (15.5% decrease), cigarettes (29.1% decrease) and marijuana (8.2% decrease)
- Pinellas County high school students reported higher rates of 30-day past use from 2002 to 2008 for alcohol, binge drinking, marijuana and inhalant use compared to the State of Florida averages

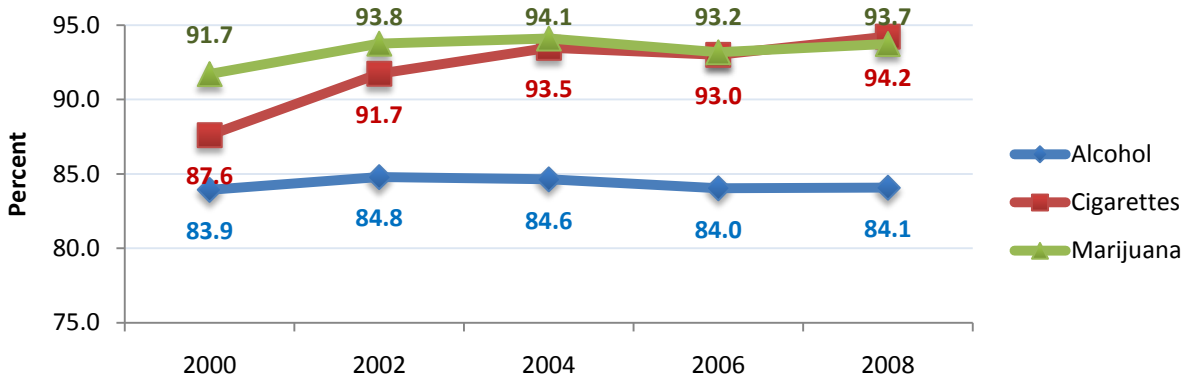
**Figure 6. Comparison of Past 30-Day Alcohol Use for Pinellas County vs. Statewide Middle and High School Students**



**Figure 7. Comparison of Past 30-Day Binge Drinking for Pinellas County vs. Statewide Middle and High School Students**



**Figure 8. Percent of Pinellas County Students who Report Their Parents Feel it Would Be Wrong or Very Wrong to Drink Alcohol Regularly, Smoke Cigarettes or Marijuana**



Note. Data obtained from FYSAS, <http://www.dcf.state.fl.us/mentalhealth/publications/fysas/>.

**Table 22. Percent of Pinellas County and Florida Statewide Students who Report Their Parents Feel it Would Be Wrong or Very Wrong to Drink Alcohol Regularly, Smoke Cigarettes or Smoke Marijuana**

	Pinellas County Students					Florida Statewide Students				
	2000	2002	2004	2006	2008	2000	2002	2004	2006	2008
Alcohol	83.9%	84.8%	84.6%	84.0%	84.1%	87.4%	86.4%	85.7%	----	85.8%
Cigarettes	87.6%	91.7%	93.5%	93.0%	94.2%	90.6%	92.9%	93.6%	----	94.3%
Marijuana	91.7%	93.8%	94.1%	93.2%	93.7%	94.2%	94.7%	95.0%	----	94.8%

Note. Data obtained from FYSAS, <http://www.dcf.state.fl.us/mentalhealth/publications/fysas/>.

- From 2000 to 2008, fewer Pinellas County parents feel that it would be wrong or very wrong to drink alcohol regularly, smoke cigarettes or smoke marijuana than parents statewide

**Table 23. Mean Age of First Substance Use among Pinellas County Students**

	Middle School			High School		
	2002 n=922	2004 n=606	2006 n=518	2002 n=804	2004 n=771	2006 n=619
More than a sip or two of alcohol	11.4	11.4	11.5	13.3	13.3	13.3
Drinking at least once a month	12.4	12.3	12.4	14.6	14.7	14.7
Cigarettes	11.2	11.5	11.2	12.6	12.7	13.2
Marijuana	12.2	12.0	11.9	14.0	13.8	14.0

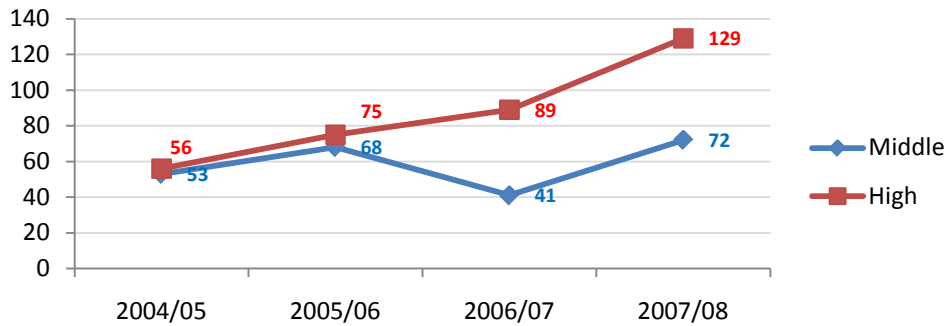
Note. Data obtained from FYSAS, <http://www.dcf.state.fl.us/mentalhealth/publications/fysas/>.

In 2008, the statistic of Mean Age of First Substance Use was changed to reflect the percentage of students who indicated they first used a substance at the age of 13 or under. The reason for this change is that the mean age of first use becomes inflated as children get older, because those youth who used drugs later in life will provide an older age, and this will move the average upwards. As a result, the mean age in older youth (e.g., high school) doesn't accurately reflect the severity of youth who start using substances early in their life. Studies have shown that the earlier children begin using alcohol and drugs, the more likely they will experience problems with substance abuse later in their lives. As a result, a more accurate indicator of how youth in a community will fare later in life is to focus on reducing the number of youth who partake of substances under the age of 14. The following table shows results for this new measurement from the 2008 Florida Youth Substance Abuse Survey.

**Table 23A. Percentages of Pinellas County Youth and Florida Statewide High School Youth who Started Using Alcohol at Age 13 or Younger**

	Pinellas County High School	Florida High School
	2008 n=459	2008 n=51,785
More than a sip or two of alcohol	34.9	32.3
Drinking at least once a month	6.5	5.9
Cigarettes	22.8	19.9
Marijuana	15.5	10.6

**Figure 9. Pinellas County Middle and High School Incidents of Alcohol, Tobacco and Other Drugs on School Property**



*Note.* Data obtained from the Florida School Indicator Report- Florida Department of Education.

- From the 2004/05 to 2007/08 school year, there was an overall increase of 130.4% of incidents of alcohol, tobacco or other drugs at Pinellas County high schools
- From the 2004/05 to 2007/08 school year, there was an overall increase of 35.8% of incidents of alcohol, tobacco or other drugs at Pinellas County middle schools (please note drop in 2006/07 school year)

**Table 24. Pinellas County Schools Out of School Suspensions for Tobacco, Alcohol or Drugs**

n= total suspensions for school year	School Year 2005/2006		School Year 2006/2007		School Year 2007/2008		School Year 2008/2009	
	Number	Percent	Number	Percent	Number	Percent	Number	Percent
<b>Elementary School</b>	(n=2,485)		(n=2,722)		(n=2,288)		(n=2,712)	
Tobacco	1	0.0%	3	0.1%	1	0.0%	0	0.0%
Alcohol	1	0.0%	1	0.0%	6	0.3%	0	0.0%
Drugs	8	0.3%	2	0.1%	3	0.1%	1	0.0%
<b>Middle School</b>	(n=5,027)		(n=5,730)		(n=5,977)		(n=8,038)	
Tobacco	14	0.3%	12	0.2%	15	0.3%	22	0.3%
Alcohol	22	0.4%	27	0.5%	26	0.4%	20	0.2%
Drugs	102	2.0%	102	1.8%	123	2.1%	107	1.3%
<b>High School</b>	(n=7,508)		(n=7,811)		(n=8,486)		(n=10,397)	
Tobacco	69	0.9%	73	0.9%	67	0.8%	98	0.9%
Alcohol	49	0.7%	67	0.9%	49	0.6%	40	0.4%
Drugs	318	4.2%	276	3.5%	276	3.3%	343	3.3%

*Note.* Data obtained from Pinellas County Schools Out of School Suspensions Reports <http://www.pcsb.org/planning/reports.html>.

- From the 2005/2006 school year to the 2008/2009 school year, drug use caused more suspensions in Pinellas County high schools than tobacco and alcohol use combined
- From 2007/2008 to 2008/2009, drug suspensions increased an overall 24.3% in high schools

## Mortality Data

**Table 25. Pinellas County Traffic Crash Statistics**

7 Year Alcohol-Related Crash History for Pinellas County						
2002	2003	2004	2005	2006	2007	2008
1,560	1,631	1,610	1,631	1,533	1,443	1,390
7 Year Alcohol-Related Fatality History for Pinellas County						
2002	2003	2004	2005	2006	2007	2008
51	37	48	39	48	40	51
7 Year Alcohol-Related Injury Rates for Pinellas County						
2002	2003	2004	2005	2006	2007	2008
1,218	1,180	1,193	1,162	987	942	895

*Note.* Data obtained from the 2008 Florida Department of Highway Safety and Motor Vehicles Traffic Crash Statistics Report.

- From 2007 to 2008, there was an overall 3.7% decrease in alcohol-related crashes in motor vehicles in Pinellas County. In 2008 Pinellas had the 4<sup>th</sup> highest rate of alcohol-related crashes in the State of Florida
- From 2007 to 2008, there was an overall 27.5% increase in alcohol-related fatalities in motor vehicles in Pinellas County. In 2008, Pinellas had the 6<sup>th</sup> highest rate of alcohol-related fatalities in the State of Florida
- From 2007 to 2008, there was an overall 5.0% decrease in alcohol-related injuries in motor vehicles in Pinellas County. In 2008, Pinellas had the 6<sup>th</sup> highest rate of alcohol-related injuries in the State of Florida

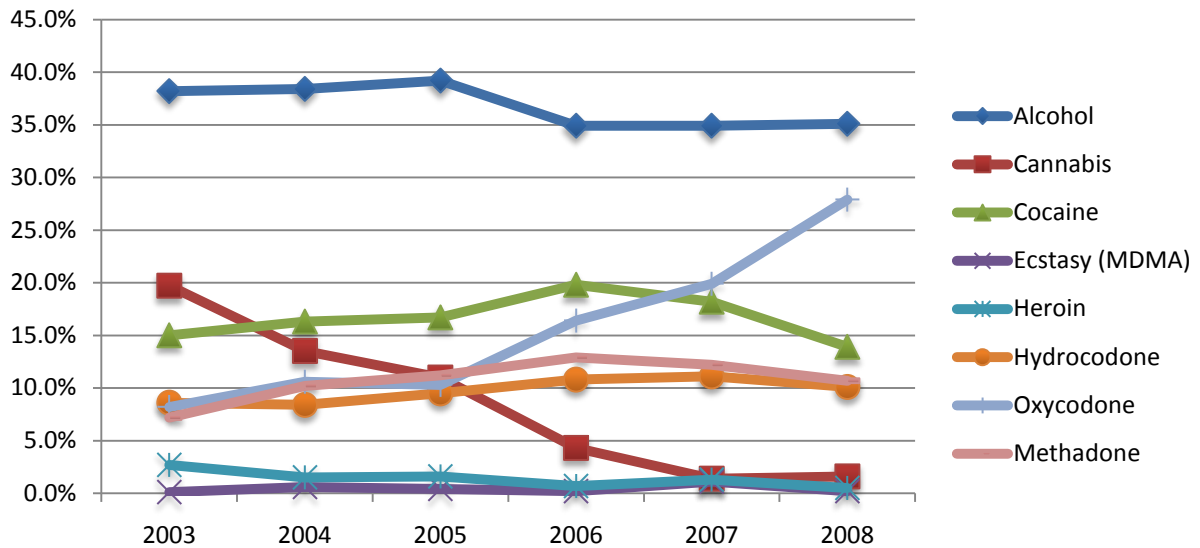
**Table 26. 2008 Top Seven Counties in Florida for DUI Related Crashes, Injuries and Fatalities**

County	Population	DUI Related Crashes	DUI Crashes Per Capita (1,000)	DUI Related Injury Crashes	DUI Injury Crashed Per Capita (1,000)	DUI Fatality Crashes	DUI Fata Crashes Per Capita (1,000)
Broward	1,758,494	1,714	0.97	1,192	0.68	65	0.04
Duval	904,971	1,356	1.50	813	0.90	45	0.06
Hillsborough	1,200,541	1,788	1.49	1,339	1.12	77	0.06
Miami-Dade	2,477,289	1,898	0.77	1,377	0.56	85	0.03
Orange	1,114,979	1,373	1.23	987	0.89	77	0.07
Palm Beach	1,294,654	1,254	0.97	1,002	0.77	79	0.06
Pinellas	938,461	1,390	1.48	895	0.95	40	0.05

*Note.* Data obtained from the 2007 Florida Department of Highway Safety and Motor Vehicles Traffic Crash Statistics Report; US Census Data; and Hillsborough County Sheriff's Office.

The 2008 Medical Examiners Annual Report documents 11,859 deaths in Pinellas County. Toxicology reports were performed on 1,119 cases in Pinellas and Pasco Counties. Of these, 1,105 tested positive for drugs or alcohol.

**Figure 10. Percentage of Toxicology Reports Testing Positive for Selected Drugs Based on Total Number Found Positive at Time of Death**



**Table 27. Pinellas and Pasco County Medical Examiners Office Toxicology Data for Deaths Testing Positive for Drugs**

Substance	2001	2002	2003	2004	2005	2006	2007	2008
Alcohol	343	355	320	353	324	326	331	388
Cannabinoids	142	122	165	124	91	40	13	18
Hydrocodone	54	59	72	77	79	101	105	112
Oxycodone	61	55	69	98	85	153	189	308
Methadone	37	52	60	94	93	121	116	118
Ecstasy (MDMA etc.)	12	7	1	6	3	2	10	2
GHB	4	2	1	3	1	0	0	0
Heroin	32	32	23	14	13	7	12	5
Cocaine	81	90	126	150	138	185	173	154
Total	766	774	837	919	827	935	949	1,105

Note. Data obtained from Medical Examiner District 6, 2008 annual report.

- From 2001 to 2008, the cases with Hydrocodone found in toxicology reports rose from 54 to 112, an overall increase of 107.4%, Oxycodone rose from 61 to 308, an overall increase of 404.9% and Methadone rose from 37 to 118, an overall increase of 218.9%, whereas Heroin decreased from 32 to 5, an overall decrease of 84.4%
- From 2001 to 2008, the cases with Cocaine found in toxicology reports rose from 81 to 154, an increase of 90.1%

According to the 2008 Medical Examiners Commission Drug Report, Benzodiazepine cases caused 929 deaths in the State of Florida and were present in 2,300 cases. Oxycodone caused 941 deaths and was present in 633 cases. District 6, which consists of Pinellas and Pasco Counties, had the highest amount of the total deaths for Alprazolam, Diazepam (a Benzodiazepine), Oxycodone, Methadone and Propoxyphene in the State of Florida.

**Table 28. Drug Related Deaths by Type, Cause and Present**

Drug	Cause Total	Present Total	Cause 18-25 year old	Present 18-25 year olds	Cause Under 18	Present Under 18
Alprazolam	62	250	11	24	2	4
Diazepam	7	138	0	14	0	2
Oxycodone	209	99	35	18	5	0
Hydrocodone	43	69	2	7	0	2
Methadone	90	28	16	4	1	2
Morphine	30	19	0	1	0	1
Propoxyphene	6	38	0	4	0	0
Heroin	5	0	1	0	0	0
Cocaine	66	88	4	7	0	1

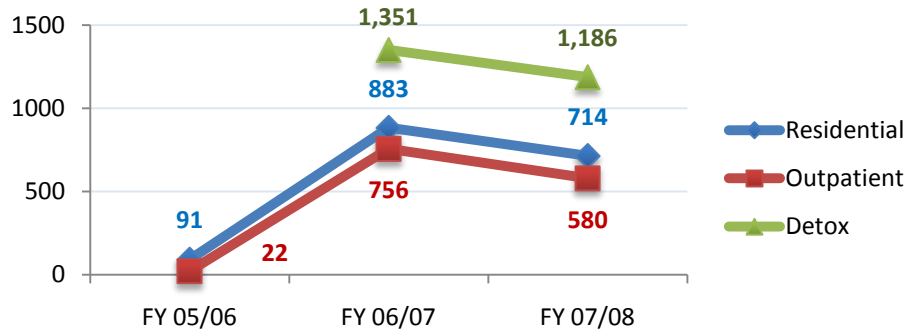
*Note.* Data obtained from the 2008 Medical Examiners Commission Drug Report.

- Oxycodone caused more drug-related deaths in District 6 than any other drug in the total population, young adult population and adolescent population

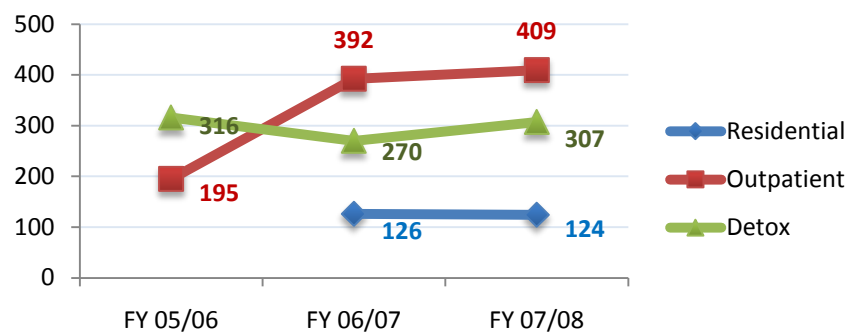
In 2008, the Pinellas County Sheriff’s Office investigated 132 cases related to prescription drugs, of which 55 resulted in arrests, totaling 167 charges. An additional 77 cases were opened in 2008 and remained active cases at the year end. In 2008, detectives in the Narcotics Division purchased or seized the following diverted medication: 2,657 Oxycodone pills, 814 Hydrocodone pills and 602 Alprazolam pills, along with other smaller quantities of diverted prescription medications. This data only pertain to the Pinellas County Sheriff’s Office and does not reflect efforts by other local law enforcement agencies.

## Treatment Data

**Figure 11. Admission to Pinellas County Substance Abuse Treatment Providers for Adults**



**Figure 12. Admission to Pinellas County Substance Abuse Treatment Providers for Youth**



*Note.* Data obtained from Central Florida Behavioral Health Network

- From 2005/2006 to 2007/2008, the number of adult admissions to residential treatment decreased by 19.1%
- From 2005/2006 to 2007/2008, the number of youth admissions into outpatient treatment increased an overall 109.7%

## Summary

Underage drinking, prescription drug misuse and abuse, other drug use, drinking and driving and driving under the influence of other drugs in Pinellas County have been an on-going concern of local community agencies. Indicator data will be used to assist local agencies in creating new policies regarding alcohol and drugs in the County as well as to support efforts of local law enforcement and social services agencies.

LiveFree! is currently working to identify where youth are gaining access to alcohol and other drugs and implementing methods to change community norms to eliminate this access. Specific activities include: a Last Drink Survey that is being conducted at the Pinellas Juvenile Assessment Center, which includes questions on prescription drug use; Compliance Checks in the City of Pinellas Park; the Rewards and Reminders Program, which rewards businesses that did the right thing and were not in violation of any liquor laws; work with the Prescription Drug Task Force of Hillsborough County, which includes members from Pinellas, Hillsborough, Pasco and Hernando Counties; participation in Be the Wall, a statewide campaign, being sponsored by the Florida Governor's Office of Drug Control, Florida Department of Children and Families and the Strategic Prevention Framework State Incentive Grant; participation in Responsible Beverage Server Training; and maintaining a Speakers Bureau charged with providing the community prevention education messages.

### Key findings:

According to the Substance Use, Health, and Safety Survey in Pinellas County, there have been **significant increases** in tobacco use in 12<sup>th</sup> graders, alcohol use in 6<sup>th</sup> and 10<sup>th</sup> graders, marijuana use in 10<sup>th</sup> and 12<sup>th</sup> graders and the misuse of prescription drugs in 12<sup>th</sup> graders.

In Central Florida, 66.0% of respondents from colleges report alcohol use in the past 30-days compared to 41.1% of Pinellas County high school students. This is an overall increase of 59.7% from high school to college recent alcohol use. Currently this is based on Central Florida averages; however, given the usage rates in Pinellas County among high school students and the unique positioning of beaches, colleges and resort activities, it would be important to obtain alcohol usage among the college population in Pinellas County.

In 2008 there were 52 alcohol-related motor vehicle fatalities in Pinellas County (6<sup>th</sup> highest in the state). There also were 895 alcohol-related motor vehicle injuries (5<sup>th</sup> highest in the state) and 1,390 alcohol-related crashes (6<sup>th</sup> highest in the state).

The amount of prescription drugs found in toxicology reports, for example Hydrocodone, Oxycodone and Methadone, indicates that non-medical use of prescription drugs is increasing at an alarming rate. A greater emphasis on prevention education and outreach on the harmful effects of prescription drugs is needed throughout the County.

## Appendix A. Youth Alcohol and Drug Data

Table 29. Detailed Comparison of Pinellas County Students Reporting Lifetime Use of Selected Drugs

Drug Type	Middle School				High School			
	2002 n=922	2004 n=606	2006 n=518	2008 n=390	2002 n=804	2004 n=771	2006 n=619	2008 n=459
Alcohol	45.9%	41.5%	37.4%	34.6%	72.2%	71.3%	72.1%	69.0%
Cigarettes	30.4%	27.1%	18.6%	15.0%	51.9%	44.5%	39.2%	39.0%
Marijuana/Hashish	14.9%	11.1%	11.9%	6.6%	43.1%	41.3%	37.6%	38.6%
Inhalants	14.1%	18.3%	15.2%	16.6%	12.0%	12.4%	11.0%	10.4%
Ecstasy	3.4%	1.6%	2.5%	----	11.8%	8.0%	6.1%	5.6%
Rohypnol	1.6%	1.5%	1.3%	----	2.3%	2.2%	2.0%	1.8%
GHB	1.2%	1.4%	1.8%	----	1.9%	1.6%	1.4%	0.9%
Ketamine	1.7%	0.8%	0.9%	----	2.2%	1.4%	1.5%	0.7%
LSD/PCP	1.8%	1.5%	1.5%	----	6.8%	4.2%	3.1%	3.5%
Hallucinogenic Mushrooms	2.8%	1.5%	2.7%	----	7.0%	9.1%	7.6%	6.8%
Cocaine	2.9%	1.6%	2.2%	----	5.9%	8.2%	5.8%	5.9%
Crack Cocaine	1.7%	1.3%	1.9%	----	2.2%	1.9%	1.6%	1.9%
Methamphetamine	2.3%	1.4%	2.8%	0.5%	3.8%	3.2%	2.5%	2.2%
Depressants	5.4%	3.4%	4.2%	1.8%	14.6%	15.9%	11.1%	11.8%
Heroin	0.8%	0.7%	1.1%	0.0%	1.7%	0.5%	1.4%	1.0%
Prescription Pain Relievers	6.2%	5.3%	5.7%	3.4%	16.0%	18.0%	15.5%	15.7%
Steroids w/o prescription	2.0%	1.2%	1.4%	1.6%	2.7%	1.3%	1.2%	1.9%
Prescription Amphetamines	3.0%	1.9%	2.3%	1.1%	7.5%	5.8%	7.5%	7.1%
Any Illicit Drug	25.0%	25.7%	23.2%	22.6%	47.5%	45.6%	42.3%	45.1%

Note. Data obtained from FYSAS, <http://www.dcf.state.fl.us/mentalhealth/publications/fysas/>.

- In 2008 in Pinellas County, lifetime use of inhalants increased in **middle schools**, whereas all other drugs reported decreased since 2006
- In 2008 in Pinellas County, lifetime use of marijuana, cocaine prescription pain relievers and depressants all increased in **high schools** since 2006

**Table 30. Detailed Comparison of Pinellas County Students Reporting Past 30-Day Use of Selected Drugs**

Drug Type	Middle School				High School			
	2002 n=922	2004 n=606	2006 n=518	2008 n=390	2002 n=804	2004 n=771	2006 n=619	2008 n=459
Alcohol	21.4%	20.7%	20.7%	19.0%	46.7%	46.2%	46.9%	42.1%
Cigarettes	7.8%	7.3%	6.2%	6.1%	20.6%	17.7%	14.1%	23.4%
Marijuana/Hashish	8.7%	6.2%	5.7%	4.0%	22.0%	19.7%	21.9%	20.2%
Inhalants	5.7%	6.5%	7.2%	6.4%	2.6%	2.6%	3.7%	2.4%
Ecstasy	1.5%	0.1%	1.0%	----	2.1%	1.7%	1.2%	0.6%
Rohypnol	0.5%	0.2%	0.5%	----	0.3%	0.9%	0.4%	0.6%
GHB	0.7%	1.3%	0.9%	----	0.3%	0.7%	0.1%	0.2%
Ketamine	0.5%	0.2%	0.5%	----	1.0%	0.5%	0.3%	1.2%
LSD/PCP	1.0%	0.4%	0.8%	----	2.1%	0.7%	0.9%	1.8%
Hallucinogenic Mushrooms	1.1%	0.6%	1.3%	----	1.8%	2.4%	2.1%	1.3%
Cocaine	1.0%	0.7%	3.0%	----	1.1%	3.0%	2.3%	1.3%
Crack Cocaine	0.5%	0.7%	0.6%	----	0.5%	0.0%	1.0%	1.4%
Methamphetamine	1.2%	0.6%	1.1%	0.6%	1.2%	0.9%	0.9%	1.4%
Depressants	2.6%	0.9%	1.7%	0.6%	6.0%	5.8%	4.8%	4.4%
Heroin	0.2%	0.1%	0.4%	0.0%	0.6%	0.1%	1.3%	0.8%
Prescription Pain Relievers	3.7%	1.7%	2.0%	1.6%	7.5%	5.8%	5.0%	4.9%
Steroids w/o prescription	0.9%	0.6%	0.4%	0.0%	1.2%	0.3%	0.5%	0.6%
Prescription Amphetamines	1.0%	0.8%	1.3%	0.5%	1.9%	0.8%	3.1%	1.9%
Any Illicit Drug	14.1%	11.7%	11.5%	10.9%	25.1%	23.5%	24.8%	23.0%

*Note.* Data obtained from Florida Youth Substance Abuse Survey (FYSAS), <http://www.dcf.state.fl.us/mentalhealth/publications/fysas/>.

- In Pinellas County in 2008, past 30-day use decreased in all alcohol or other drugs reported in middle schools since 2006
- In Pinellas County in 2008, past 30-day use decreased in alcohol, marijuana, inhalants and cocaine in high schools, whereas past 30-day use in tobacco, ketamine, LSD/PCP, crack cocaine and methamphetamine all increased

**Table 31. Detailed 2008 Comparison of Pinellas County Students versus Statewide Students Reporting Lifetime Use of Selected Drugs**

<b>Drug Type</b>	<b>Pinellas Middle Schools (n=390)</b>	<b>Statewide Middle Schools (n=39,686)</b>	<b>Pinellas High Schools (n=459)</b>	<b>Statewide High Schools (n=51,785)</b>
Alcohol	34.6%	36.3%	69.0%	66.2%
Cigarettes	15.0%	17.4%	39.0%	34.4%
Marijuana/Hashish	6.6%	8.5%	38.6%	30.8%
Inhalants	16.6%	13.2%	10.4%	10.1%
Ecstasy	----	----	5.6%	4.9%
Rohypnol	----	----	1.8%	1.2%
GHB	----	----	0.9%	0.7%
Ketamine	----	----	0.7%	0.8%
LSD/PCP	----	----	3.5%	3.0%
Hallucinogenic Mushrooms	----	----	6.8%	5.3%
Cocaine	----	----	5.9%	5.5%
Crack Cocaine	----	----	1.9%	1.8%
Methamphetamine	0.5%	1.2%	2.2%	1.5%
Depressants	1.8%	2.4%	11.8%	8.7%
Heroin	0.0%	0.8%	1.0%	1.0%
Prescription Pain Relievers	3.4%	4.9%	15.7%	10.4%
Steroids w/o prescription	1.6%	0.8%	1.9%	1.2%
Prescription Amphetamines	1.1%	1.6%	7.1%	5.3%
Any Illicit Drug	22.6%	21.2%	45.1%	37.5%

*Note.* Data obtained from Florida Youth Substance Abuse Survey (FYSAS), <http://www.dcf.state.fl.us/mentalhealth/publications/fysas/>.

- FYSAS data from Pinellas County versus the State of Florida data in 2008 indicates:
  - Pinellas County middle school averages are higher than statewide middle school averages in inhalants and steroids lifetime use
  - Pinellas County high school averages are higher than statewide high school averages in alcohol, tobacco, marijuana, cocaine, methamphetamine and prescription pain relievers lifetime use

## Appendix B. DJJ Data

### Zip Code Data for Pinellas County

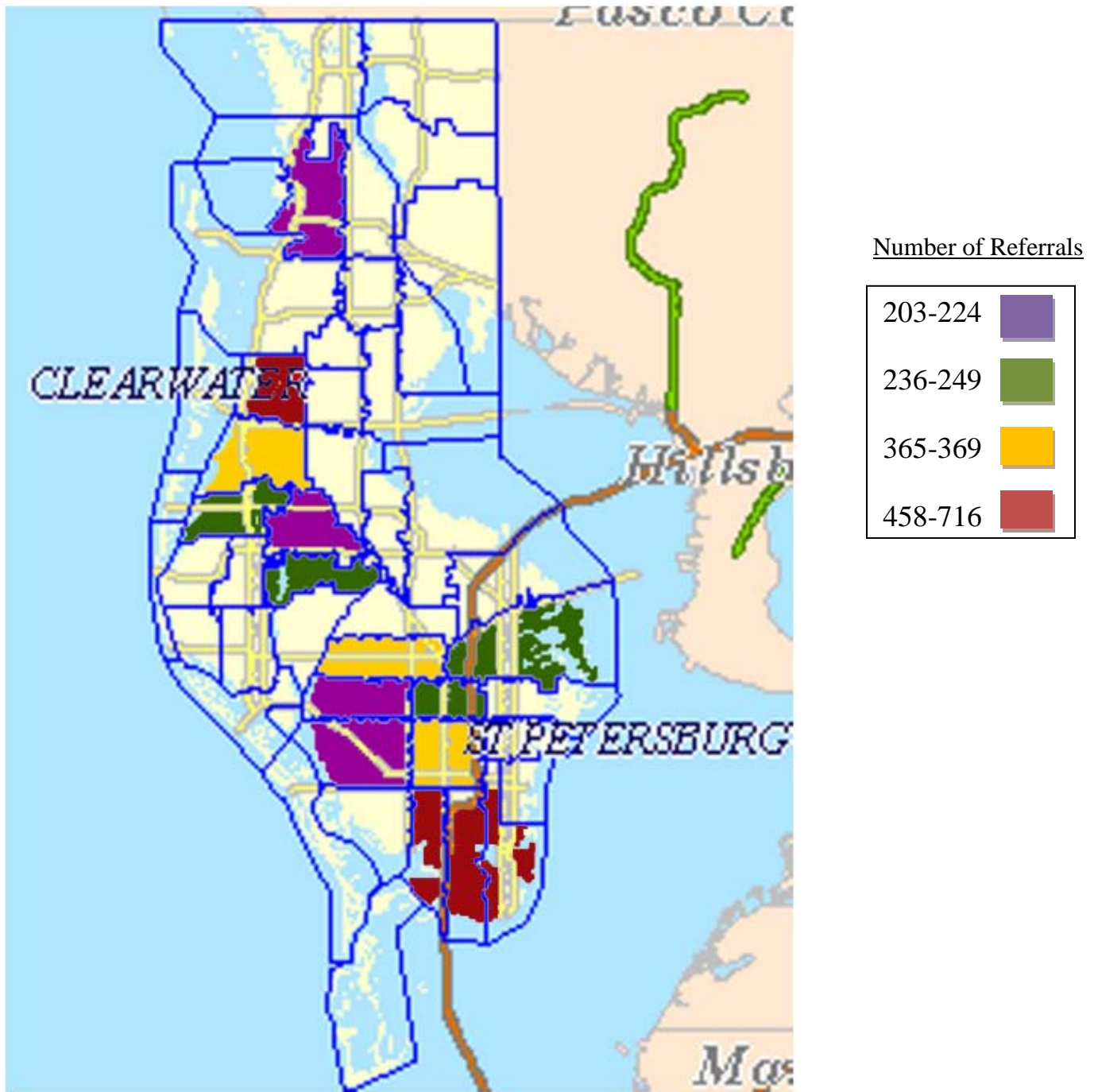
The table below presents data from all Pinellas County zip codes where more than 100 youth referrals were presented to the Department of Juvenile Justice. The data presented measure the number of delinquency charges, delinquency referrals and the number of youth living in the zip code referred to the Department for a delinquency offense.

**Table 32. Pinellas County Zip Codes with Referrals to DJJ in Fiscal Year 2007/2008**

All ZIP Codes With 100+ Referrals to DJJ (n=6,723)						
Zip code	Rank	Charges	Referrals	Youth	% of Total Referrals	Cumulative % of Total Referrals
33705	1	1240	695	343	8.1%	8.1%
33711	2	1235	716	310	8.3%	16.4%
33712	3	995	611	340	7.1%	23.6%
33755	4	721	458	232	5.3%	28.9%
33781	5	644	369	189	4.3%	33.2%
33713	6	544	336	189	3.9%	37.1%
33756	7	539	365	183	4.3%	41.4%
33714	8	418	236	134	2.7%	44.1%
33773	9	393	249	131	2.9%	47.0%
33771	10	380	206	128	2.4%	49.4%
33770	11	360	240	122	2.8%	52.2%
34698	12	352	201	114	2.3%	54.5%
33702	13	343	238	126	2.8%	57.3%
33701	14	322	145	73	1.7%	59.0%
33710	15	311	224	145	2.6%	61.6%
33709	16	309	214	124	2.5%	64.1%
33760	17	292	174	107	2.0%	66.1%
33772	18	292	164	85	1.9%	68.1%
34683	19	289	203	134	2.4%	70.4%
33782	20	268	190	99	2.2%	72.6%
33733	21	267	134	36	1.6%	74.2%
33707	22	253	167	108	1.9%	76.1%
34689	23	252	172	119	2.0%	78.1%
33777	24	238	152	81	1.8%	79.9%
33778	25	222	140	78	1.6%	81.5%
33774	26	189	114	61	1.3%	82.9%
34677	27	187	136	96	1.6%	84.5%
33759	28	172	122	72	1.4%	85.9%
33703	29	167	119	83	1.4%	87.3%
33763	30	162	96	62	1.1%	88.4%
34684	31	162	126	89	1.5%	89.9%
33764	32	151	111	59	1.3%	91.1%
33765	33	137	95	57	1.1%	92.3%
33761	34	107	66	48	0.8%	93.0%
34695	35	101	72	54	0.8%	93.9%
Remainder		722	527	369	6.1%	100.0%
Totals		13736	8583	4780	100.0%	71.0%

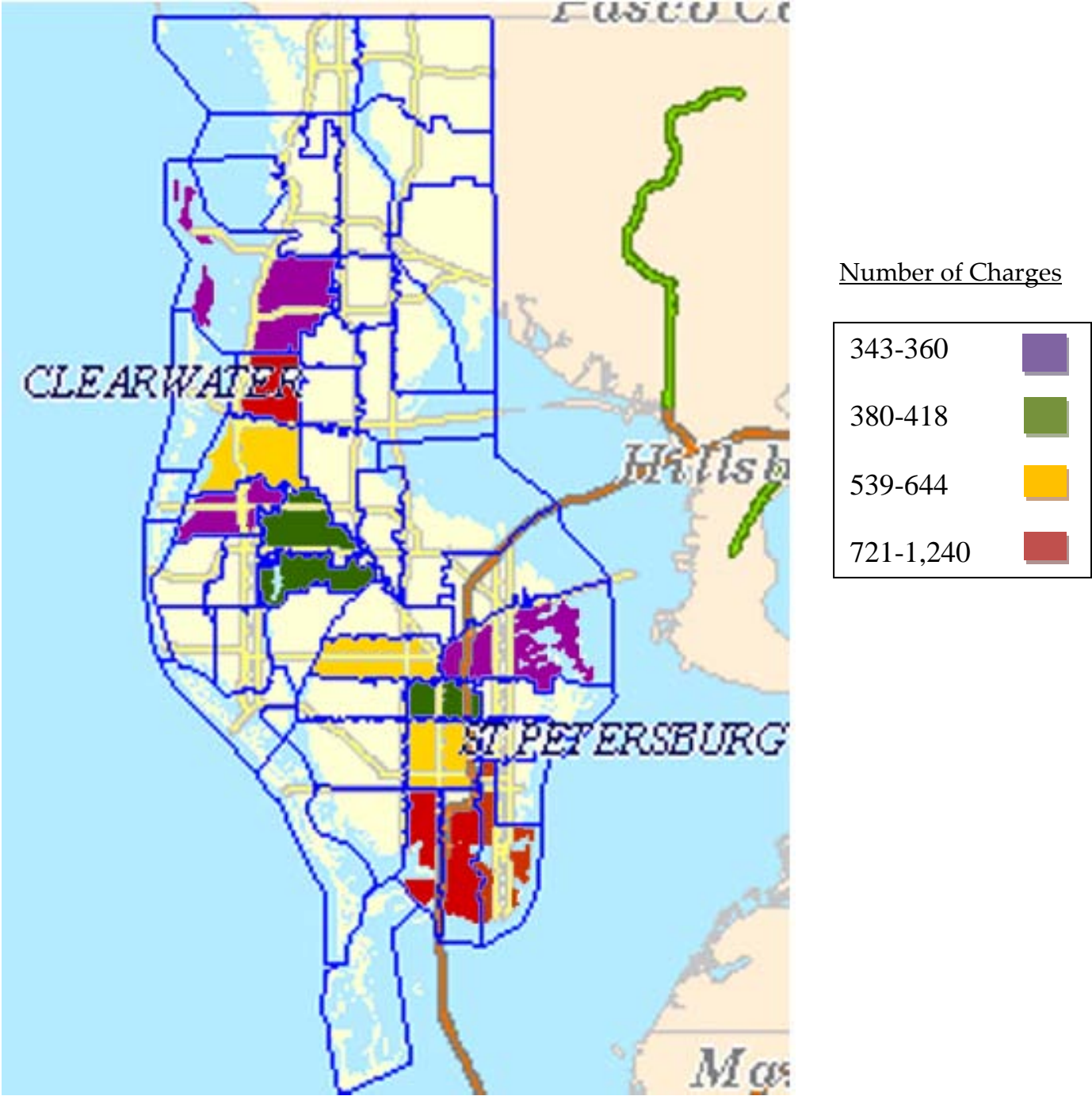
Note. Data obtained from The Department of Juvenile Justice Bureau of Data and Research.

Figure 13. Map of Pinellas County High Risk Zip Codes for Youth Referrals to DJJ in Fiscal Year 2007/2008



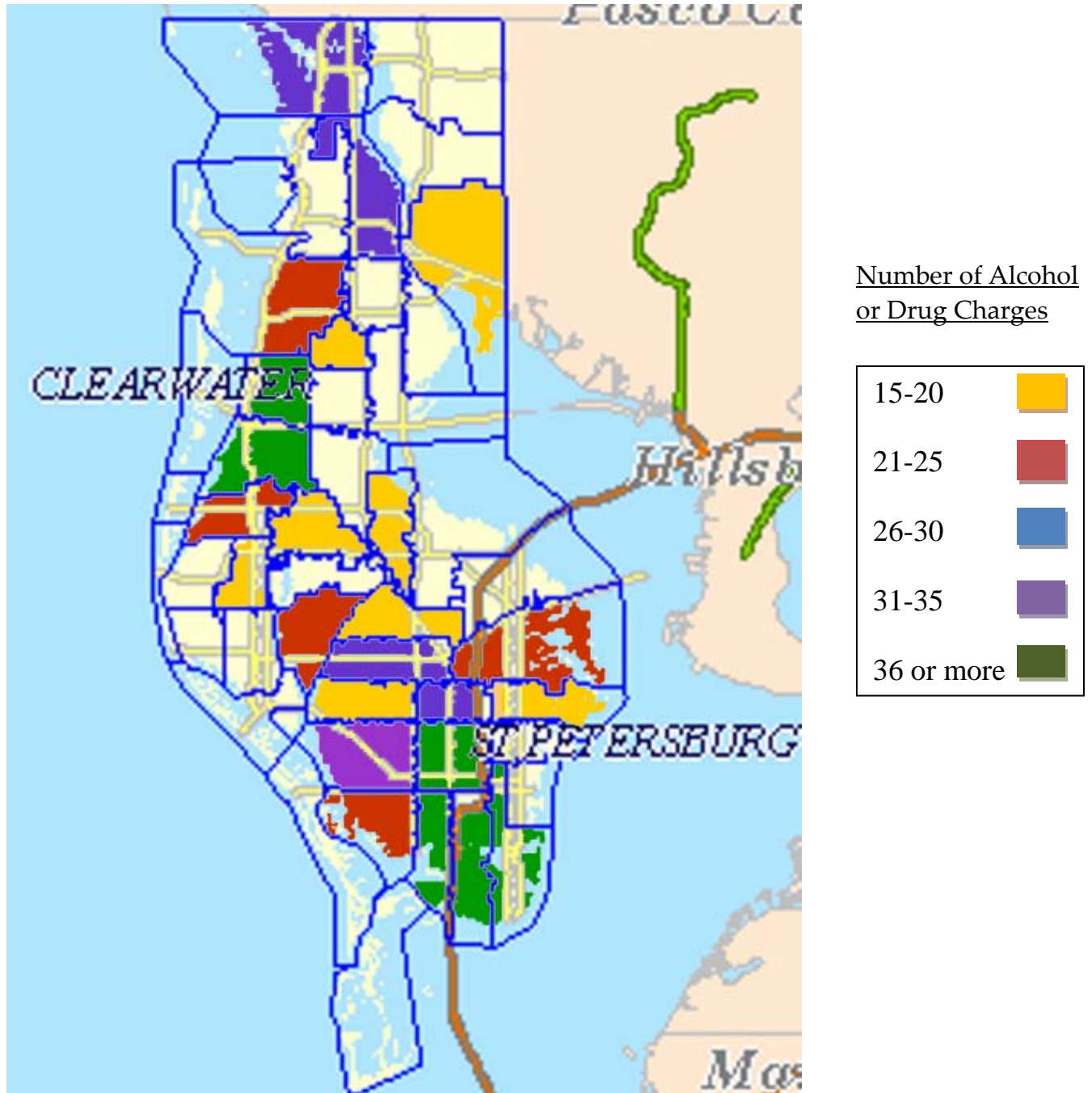
Note. Data Obtained from the Florida Department of Juvenile Justice.

Figure 14. Map of Pinellas County High Risk Zip Codes for Youth Charges from DJJ in Fiscal Year 2007/2008



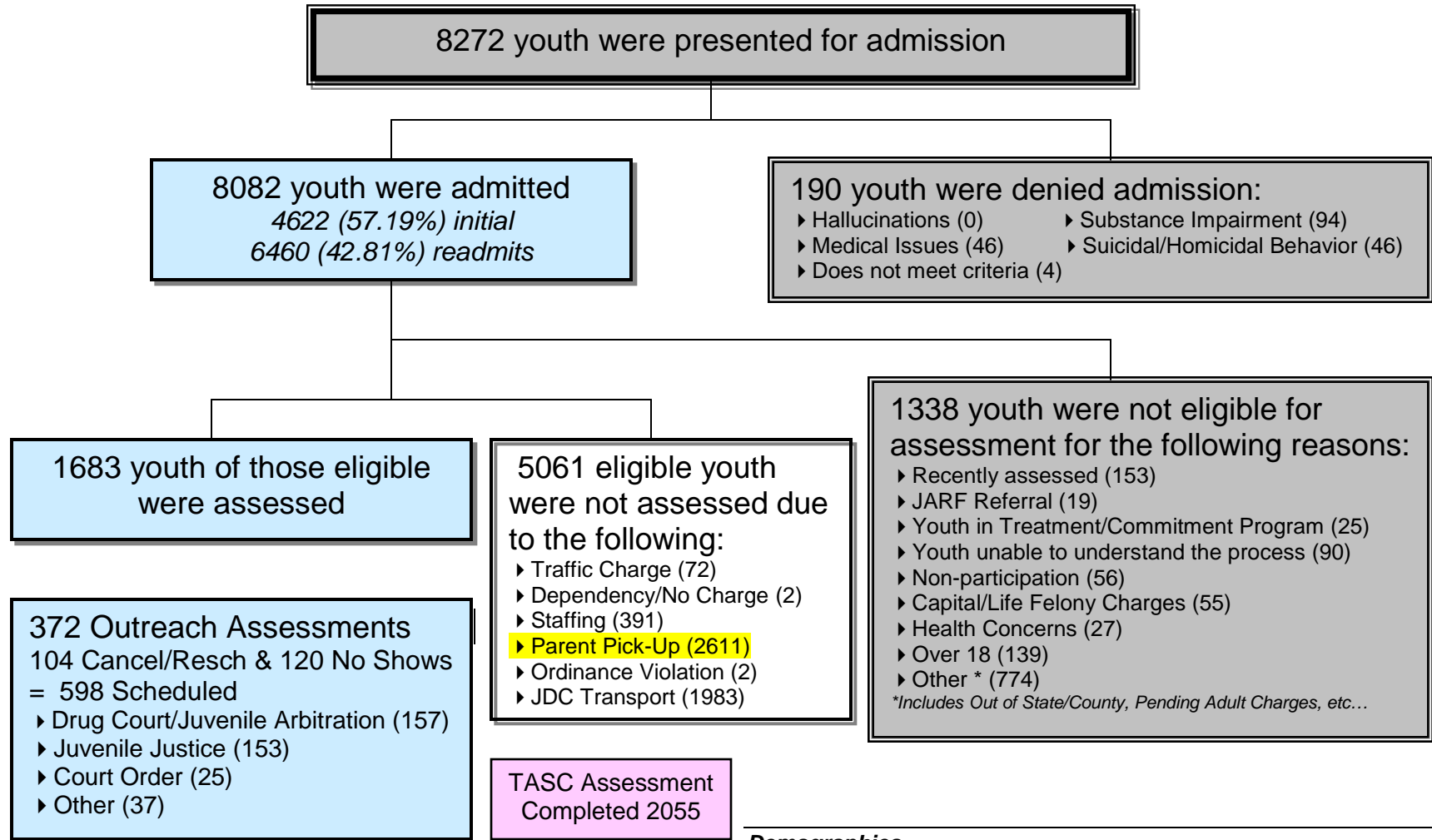
Note. Data Obtained from the Florida Department of Juvenile Justice.

**Figure 15. 2008 Zip Code Map of Pinellas County Non Alcohol-Related Drug Charge by Youth Location of Residence**



*Note.* Data Obtained from the Criminal Justice Information System.

## Appendix C. Pinellas Juvenile Assessment Center (PJAC) 2006 Annual Report



### Demographics

**Charges:** Misdemeanors (34%), Felonies (27%), Court related Offenses (21%), Non-Delinquent Offenses (12%), and Other (6%)

**Law Enforcement Referrals:** Pinellas County Sheriff's Office (32%), St. Petersburg PD (26%), Clearwater PD (9%), Largo PD (7%), Pinellas Park PD (7%), Youth Custody Officers (2%), and all other agencies or individuals (17%).

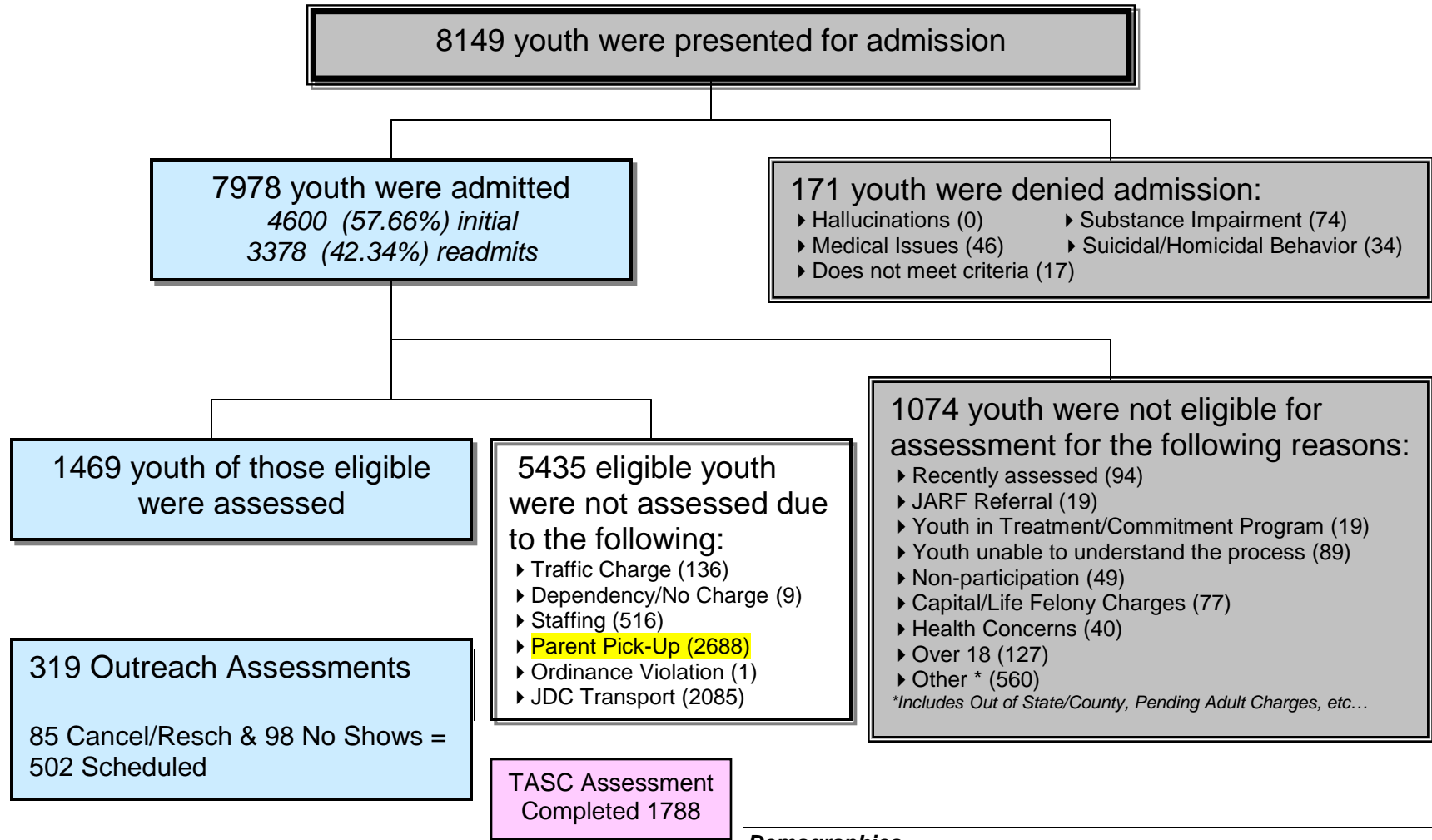
### Demographics

**LEO Processing Time:** 99% of LEO were processed in ten minutes or less. The average length of stay was 2.70 minutes.

**Drug Screening:** 1048 youth were screened, 282 youth returned positive or 28% (27 result is still pending). 25% screens returned positive for marijuana and 5% for cocaine.

**Demographics:** 48% of youth served were 15 & 16 years old. 30% of all youth admitted were females, 70% were males. 52% of youth admitted were white, 41% were black.

# Pinellas Juvenile Assessment Center 2007 Annual Report



**Demographics**

**Charges:** Misdemeanors (32%), Felonies (28%), Court related Offenses (20%), Non-Delinquent Offenses (12%), and Other (8%)

**Law Enforcement Referrals:** Pinellas County Sheriff's Office (29%), St. Petersburg PD (28%), Clearwater PD (10%), Largo PD (6%), Pinellas Park PD (6%), Youth Custody Officers (3%), and all other agencies or individuals (18%).

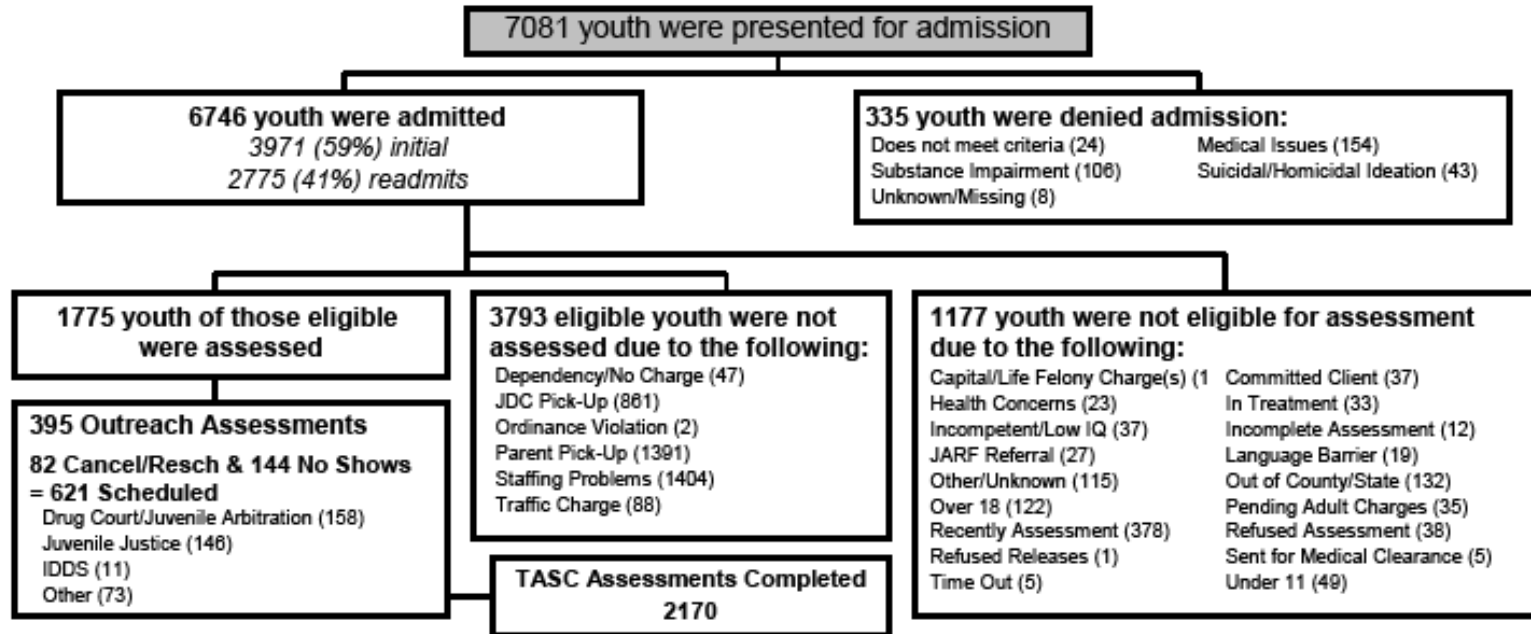
**Demographics**

**LEO Processing Time:** 99% of LEO were processed in ten minutes or less. The average length of stay was 3.00 minutes.

**Drug Screening:** 1031 youth were screened, 296 youth returned positive or 31% (85 results are still pending). 31% screens returned positive for marijuana and 3% for cocaine.

**Demographics:** 50% of youth served were 15 & 16 years old. 32% of all youth admitted were females, 68% were males. 49% of youth admitted were white, 44% were black.

## Pinellas Juvenile Assessment Center January - December 2008 Annual Report



**Demographics**

**LEO Processing Time:** 99% of LEO were processed in ten minutes or less. The average length of stay was 2.95 minutes.

**Law Enforcement Referrals:**

- Pinellas County Sheriff's Office (1870 or 28%)
- St. Petersburg PD (1777 or 26%)
- Other Agencies or Individuals (1280 or 19%)
- Clearwater PD (746 or 11%)
- Pinellas Park PD (488 or 7%)
- Largo PD (417 or 6%)
- Youth Custody Officers (160 or 2%)

**Demographics**

**Charges:**

- Misdemeanor (2722 or 36%)
- Felony (2484 or 33%)
- Court-Related Offense (1605 or 21%)
- Non-Delinquent Offense (788 or 10%)
- Other (25 or 0%)

**Drug Screening:** 1395 youth were screened. 412 youth returned positive or 30%. 28% screens returned positive for marijuana and 2% for cocaine.

**Demographics:** 50% of youth were 16 & 17 years old. 30% of all youth admitted were female, while 70% were male. 49% of youth admitted were white, while 42% were black.

## Appendix D. Florida Alcohol and Drug Annual Impact Data

According to the Annual Economic Impact of Alcohol in Florida and the Annual Economic Impact of Drugs in Florida, studies which analyzed the economic costs caused by alcohol and drug use in Florida, consequences from alcohol and other drugs impact individuals, their families and entire communities, (Florida Alcohol and Drug Abuse Association (FADAA) and the Florida Substance Abuse and Mental Health Corporation). There is a link between alcohol and drug use and adverse events, such as traffic accidents, etc. Some of the key points depicted in the studies are listed below:

- Over 9 billion drinks are consumed in Florida each year
- 6,276 deaths occur annually due to alcohol use in Florida
- 4,368 deaths occur annually due to drug use in Florida
- Approximately 3% of Florida's Gross Domestic Product is spent on adverse events caused by alcohol and another 3% respectively on drug use adverse events

**Table 33. State of Florida Economic Costs of Adverse Events of Alcohol Use**

Areas of Adverse Events of Alcohol	Costs
<b>Illness</b>	
Direct Illnesses from Alcohol	\$572,683,320
Illnesses Attributed to Alcohol	\$452,784,647
Alcohol Related Neurological Disorders/ Fetal Alcohol Syndrome	\$432,045,575
Work Loss	\$9,017,786
<b>Injuries</b>	\$8,905,099,639
<b>Traffic Collisions</b>	
Injuries	\$2,358,340,024
Fatalities	\$1,257,179,959
Quality of Life	\$3,658,397,626
<b>Crime</b>	
Incarceration	\$415,192,465
Victim	\$3,013,793,984
<b>Total</b>	<b>\$21,074,535,025</b>

**Table 34. State of Florida Economic Costs of Adverse Events of Drug Use**

Areas of Adverse Events of Drugs	Costs
<b>Illness</b>	
Direct Illnesses from Drugs	\$97,102,980
Work Loss	\$6,770,627
<b>Deaths</b>	\$20,429,346,232
<b>Crime</b>	
Incarceration	\$1,077,450,638
Victim	\$1,257,173,304
<b>Total</b>	<b>\$22,867,843,781</b>

*Note.* Data obtained from the Florida Alcohol and Drug Abuse Association (FADAA) and the Florida Substance Abuse and Mental Health Corporation.